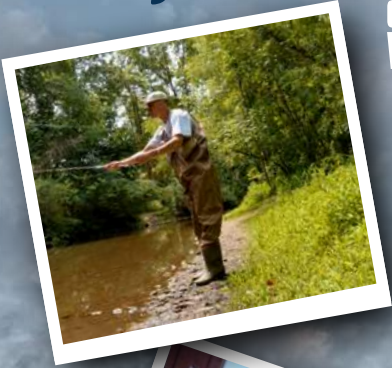


EXPLORE Waynesboro

GREATER
WAYNESBORO
CHAMBER OF COMMERCE



2024

**WELCOME GUIDE AND
MEMBERSHIP DIRECTORY**



NOBODY BEATS A BUCHANAN DEAL!

THE AREA'S LARGEST SELECTION OF VEHICLES!

10 YEAR 100K MILE POWERTRAIN WARRANTY

The area's best standard coverage EXCLUSIVELY on pre-owned inventory under 6 years old and 80,000 miles.



ONLY AT BUCHANAN!



RECEIVE AN ADDITIONAL

\$500 OFF

WHEN YOU PRESENT THIS COUPON!

MUST SURRENDER COUPON AT TIME OF USE. ONE COUPON PER TRADE-IN. SEE DEALER FOR COMPLETE DETAILS.

VALID AT:

B Buchanan 1035 E MAIN ST
AUTOMOTIVE WAYNESBORO, PA 17268 | (717) 373-2947

B Buchanan 11582 BUCHANAN TRAIL EAST
AUTO PARK WAYNESBORO, PA 17268 | (717) 788-5069



Photo © Andy Smetzer

2024

TABLE OF CONTENTS

Our Chamber	4
Our Community	8
Government	18
Local Education	26
Business and Industry	32
Living Well	42
Keeping the Faith	50
The Great Outdoors	54
Do Dine Stay	62
Community Resources	75
Membership Directory	82
Alphabetical Membership	111



CONNECT WITH US | #GROWWBO



A great place

TO LIVE, WORK AND PLAY

WELCOME TO WAYNESBORO!

Away from the bustle... close to the fun! Welcome to the greater Waynesboro area – where the city comes to relax. Whether you are looking to relocate your home or business, visiting, or just briefly passing through, I invite you to use this community guide to explore all that this area has to offer.

The greater Waynesboro area is a charming town full of rural heritage, unique architecture, historic landmarks, flourishing arts scene and thriving business and industry. Waynesboro was once ranked one of the 10 Best Places to Retire in Pennsylvania by the Real Estate Blog. The blog also named Waynesboro a top town in Pennsylvania for weather.

We love it here and think you will, too. Whether the reason you're here is for business or pleasure, welcome to our cozy town – where you'll soon discover is a great place to *live, work and play*.

Sincerely,

Jackie

OUR MISSION

Enhancing our community by fostering business success, building connections, and providing resources.

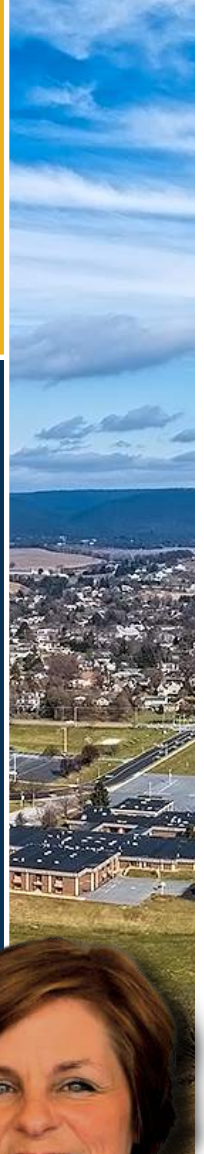
OUR STAFF

Jackie Mowen, Executive Director
director@waynesboro.org | 717-762-7123

Sean Bockstie, Assistant Director
admin@waynesboro.org | 717-762-7123

STOP BY

118 Walnut St
Waynesboro, PA, 17268
Monday - Friday
9 am - 4:30 pm



Growing a vibrant BUSINESS COMMUNITY

OUR CHAMBER

The Greater Waynesboro Chamber of Commerce provides its members with a multitude of opportunities to help improve a company's bottom line, expand its network, strengthen employees' professional skills, and better expose the company's brand to other businesses and the community at-large.

A chamber membership is a business's badge of credibility as an ethical, reliable company and demonstrates that company's commitment to working together with the chamber to improve the socio-economic well-being of the greater Waynesboro area.

OUR BOARD OF DIRECTORS



Evelyn Farnsworth
F&M Trust, President



Andy Everetts
M&T Bank, Vice President



Mark McLaughlin, Jr.
McLaughlin's Energy Services, Secretary



James Pryor
WellSpan Health, Treasurer



Sid Creager
Musselman and Creager



Mayor Richard Starliper
Borough of Waynesboro



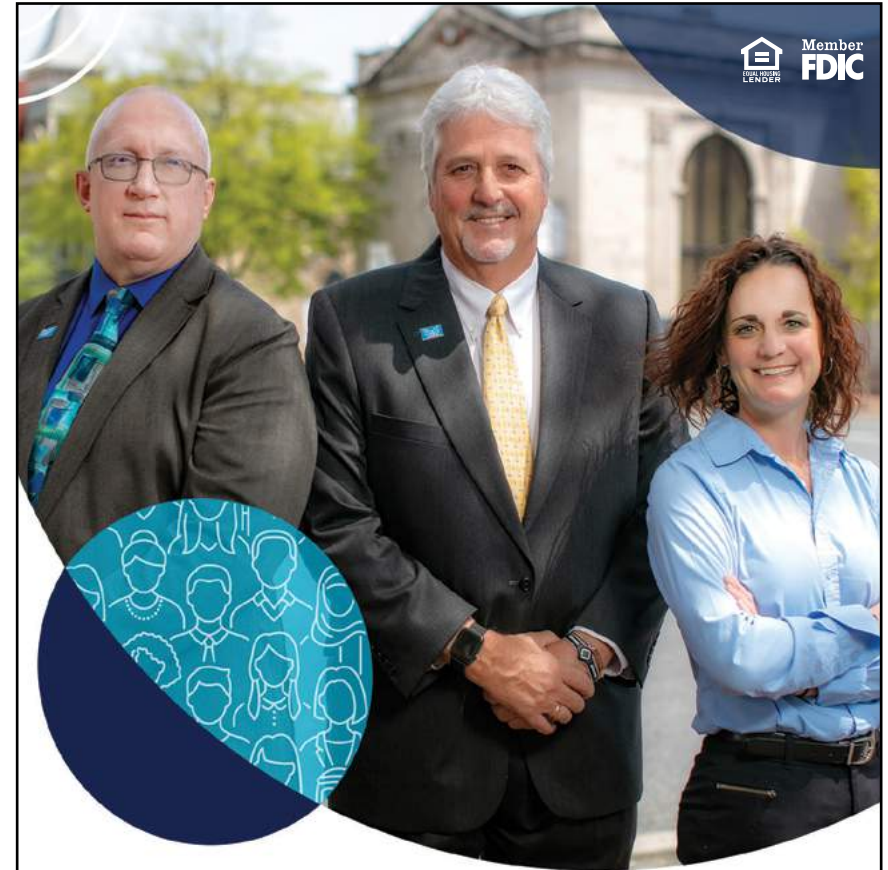
Derek Furry
Bartlett Tree Experts



Erin Shank
State Farm Insurance



Cheyenne Morris
Essential Marketing Concepts



Achieving More Together
community

Contact us today!
www.mvbbank.com
(844) 533-9211

Here for all of your moments.

 Middletown
Valley Bank.

A Community Heritage Financial, Inc. Company

Our Community

Livability.com names Waynesboro as one of 11 Up-and-Coming cities in Pennsylvania that deserves a second look. Journalist Brittany Anas writes, "Once a major stopover between Baltimore and Pittsburgh, Waynesboro became a spot for rapid growth during the Industrial Revolution. The Franklin County community was bustling with tool and machine makers, and railroad resorts for travelers popped up alongside homes. Today, young professionals are falling for the charm of the historic homes that fill the area, and, armed with restoration prowess, are giving old buildings some TLC. Once again, location is a major advantage for the economy in Waynesboro and the surrounding region. With proximity to Interstate 81, the county is well-connected to major metropolitan regions and has a diverse economy with manufacturing, health care, education, retail and hospitality sectors. The area's year-over-year job growth has increased 1.8 percent and wage growth has gone up 2.8 percent. Judging by the increase in home values, more people are finding out about Waynesboro and its modern shops, golf courses and fantastic food scene."

Population By Municipality

- » Mont Alto Borough: 1,580
- » Quincy Township: 5,318
- » Waynesboro Borough: 10,951
- » Washington Township: 14,897

***Total Population: 32,740**

*2020 Decennial Census

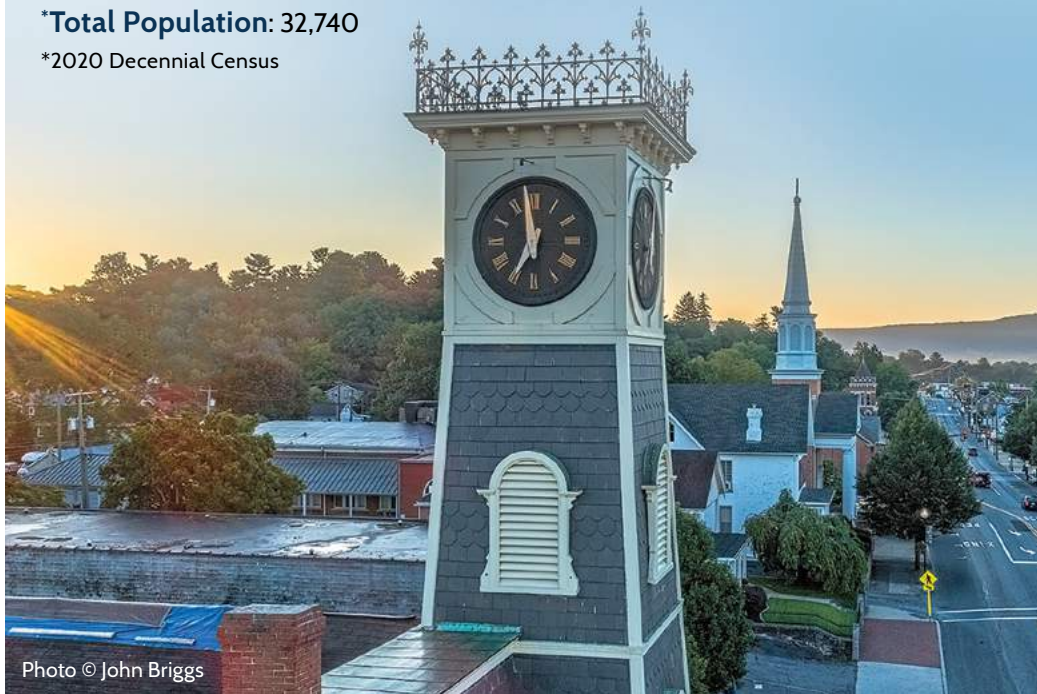


Photo © John Briggs



McLaughlin's
Energy Services

Heating Oils and Propane Gas · Family Operated for Over 69 Years

11931 Buchanan Trail East, Waynesboro, PA 17268

717-762-5711 • www.MCLHEAT.com

Our Weather

How's the weather here? Great! Good enough, in fact, that Movoto Real Estate blog named Waynesboro a top town for weather in Pennsylvania with weather not prone to catastrophic proportions. Summers are warm with an average July temperature of 83 degrees. Winters are often mild with an average January temperature of 46 degrees.

Residents here enjoy picnics amidst budding flora in spring, lazy afternoon swims and rounds of golf during summer, walks under canopies of amber and scarlet foliage in fall and snowman building and sledding beneath clear winter skies.

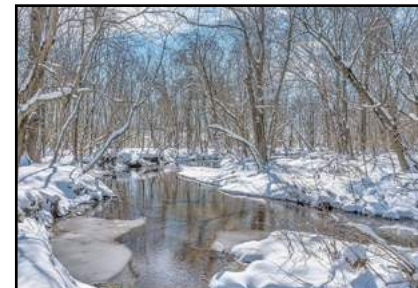


Photo © John Briggs



AFS Insurance
& Financial Services

KEYSTONE

*Your Trusted
Independent
Insurance
Agency*

11001 Anthony Hwy // Waynesboro, PA 17268
717-762-5780 // www.afsagent.com

Mont Alto Borough

717-749-5808 | www.montaltoborough.com

Borough Office 3 N. Main Street, Mont Alto, PA 17237

Elected Officials Borough Council, Mayor



*Mayor
McCleaf*

Mont Alto was founded in 1762 as Funkstown by early settler John Funk. The Mont Alto Railroad was built in 1872 to facilitate transportation of products. Soon after, in 1879, Funkstown and the neighboring village of Alto Dale combined to become Mont Alto. The Borough of Mont Alto was incorporated in 1913.

Legend has it that abolitionist John Brown lived in Franklin County and occasionally taught Sunday School at Emmanuel Episcopal

Church in Mont Alto, now located at the edge of the Penn State Mont Alto Campus.

Dr. Joseph T. Rothrock established the Mont Alto Forest Academy in 1903.

It became annexed by the Borough of Mont Alto and in 1959, Penn State Mont Alto began offering courses.

Statistics & Info

- » Zip Code: 17237
- » Total Households: 684
- » Median Household Income: \$62,429
- » Median Age: 36
- » Population: 1,580

Quincy Township

717-762-5679 | www.quincytwp.org

Township Office 7575 Mentzer Gap Road, Waynesboro, PA 17268

Elected Officials Township Supervisors



Founded in 1800, Quincy Township shares a municipal boundary with the Borough of Mont Alto. In 1878, through the energies of G.B. Weistling and others, the Mont Alto Railroad was extended to Waynesboro through Quincy Township. Many historic homes and buildings still stand in the

township, which is host to numerous farms and orchards.

The Western part of Quincy Township is part of the Great Appalachian Valley, an agricultural area with elevations in the township ranging from 650 to 1,100 feet, while the eastern half is on the slopes and crest of South Mountain, the highest point of which is the summit of Snowy Mountain, with an elevation exceeding 2800 feet. The Appalachian Trail traverses the Eastern side of the township.

Statistics & Info

- » Zip Code: 17268 (PO Boxes 17247)
- » Total Households: 2,220
- » Median Household Income: \$56,586
- » Median Age: 43
- » Population: 5,318

Over 50 years in business!

For Your Complete Tree and Shrub Care Needs

Tree removal • Spraying • Plant Health Care
(717) 263-1940

Antietam
Tree & Turf

Washington Township

717-762-3128 | www.washtwp-franklin.org
 Township Office 13013 Welty Road, Waynesboro, PA 17268
 Elected Officials Township Supervisors



Consisting of 39.4 square miles surrounding the Borough of Waynesboro, Washington Township was organized in 1779. The township communities of Zullinger, Rouzerville, and Blue Ridge Summit were founded in 1868, while the area of Wayne Heights was laid out in the early 20th century.

After the creation of the railroad, Blue Ridge Summit became a resort town, boasting luxurious hotel accommodations for the wealthy that traveled there from the Washington, D.C., region to vacation.

Today, Washington Township is home to a number of historic sites, including Renfrew Museum and Park, Harbaugh Church and Cemetery, Welty Mill Bridge, and the Civil War Battle of Monterey Pass.

Statistics & Info

- » Zip Code: 17268
- » Median Age: 44
- » Total Households: 5,887
- » Population: 14,897
- » Median Household Income: \$65,946

GANOE PAVING INC.

RESIDENTIAL & COMMERCIAL PAVING
 SEAL COATING & EXCAVATING

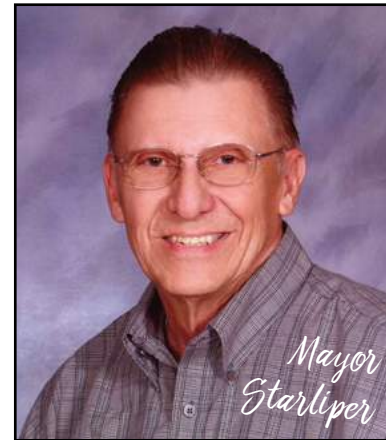
DIRK MOWEN President and Owner

www.ganoepavinginc.com
 717-597-2567
 Cell 717-360-8185

1455 Buchanan Trail West in Greencastle, PA 17225

Waynesboro Borough

717-762-2101 | www.waynesboropa.org
 Borough Office 55 E. Main Street, Waynesboro, PA 17268
 Elected Officials Borough Council, Mayor



Waynesboro was founded in 1749 when Scotsman John Wallace settled near the Antietam Creek. Wallace held title to 633 acres, almost one square mile. He called his land "Mount Vernon," while others referred to it as "Wallacetown." His son, John, later inherited the land after returning home from fighting in the Revolutionary War.

In 1797, John mapped out a town of 90 lots, which he named "Waynesburg" after his admired

commander, General "Mad" Anthony Wayne. The town's name was contested by several other Pennsylvania towns bearing the same name and the federal government soon ruled post offices in the same state could not have the same name. The town was incorporated as "Waynesborough," which in 1831 was shortened to "Waynesboro."

Statistics & Info

- » Zip Code: 17268
- » Median Age: 37
- » Total Households: 5,243
- » Population: 10,951
- » Median Household Income: \$46,278

R. LEE ROYER & ASSOCIATES

PENNSYLVANIA/MARYLAND
LAND SURVEYING

10764 BUCHANAN TRAIL EAST WAYNESBORO, PA

717-762-5619 • LEEROYERASSOCIATES@COMCAST.NET



The Manitowoc Company, one of the largest employers in Franklin County, is the leading manufacturer of mobile hydraulic lifting equipment for the global construction industry. Our product brands — Grove, Manitowoc, National Crane, Potain, and Shuttlelift — can be found across the country and around the world.

Established in 1947, our facility in Shady Grove has a reputation for strong, reliable lifting equipment consistently popular with those who operate it. **Career opportunities, ranging from office to assembly line, with competitive pay rates and excellent benefits await you at Manitowoc.** Join us and *Build Something Real.*

Learn more about us at manitowoc.com.



Historic Beginnings

ON THE FRONTIER

As the years continued, Waynesboro became a crossroads town and prospered by providing goods and services for the wagon trains traveling west. According to local lore, during the French and Indian War, two young girls, the Renfrew sisters, were attacked and killed by Native Americans while washing laundry in a creek near their home. The tale tells us several townspeople banded together to find those responsible for the girls' deaths and obtain the girls' remains so a proper burial could take place.



All Photos © John Briggs

CIVIL WAR INVOLVEMENT

During the Civil War in June 1863, Confederate troops preparing for the Battle of Gettysburg captured Waynesboro for 15 days, raising the Confederate flag above town and forcing citizens to provide food to the soldiers. The Battle of Monterey Pass occurred in Blue Ridge Summit just days after the Battle of Gettysburg. It was during this battle that George Armstrong Custer and his Michigan Calvary Brigade attacked and captured part of Robert E. Lee's retreating Army of Northern Virginia.



Industry

The foundation of Waynesboro's industrial activity was laid by George Frick, whose invention of a small steam engine for farm use replaced cumbersome horsepower. He founded Frick Co., now known as Johnson Controls, in 1873, while brothers Abraham and Franklin Landis followed in his inventive footsteps. The Landis brothers not only manufactured the first cylindrical grinding machines in 1883, they also formed Landis Tool and Landis Machine, now known as Cinetic Landis Corp. and Landis Threading System, respectively.

Today, local industrial wealth is further enhanced by Beck Manufacturing, maker of pipe nipples and couplings and Manitowoc Crane Group.

INDUSTRIAL MUSEUM

The **Waynesboro Area Industrial Heritage Trust** is found on a quiet Waynesboro side street in a former church built by Franklin Landis, one of the area's early industrial pioneers. Open to residents and visitors for special events and by appointment, the museum's mission is to provide insight into the community's rich industrial heritage.

Located at 235 Philadelphia Avenue, the museum houses a collection of locally significant artifacts, drawings, and photographs. For more information, call 717-762-4460 or visit: industrialmuseum.weebly.com.



Industrial Museum



Now known as Johnson Controls

The Chamber is More than Business It's About Community

Calendar
of Events

**GREATER
WAYNESBORO**
CHAMBER of COMMERCE



Women's Conference

Chamber Card



Mayor and McGruff

Business Referrals
& Resources



Nite at the Races

Welcome Bags



Golf Tournament

Community
Development

Signature Events



Visit our website at www.waynesboro.org, follow us on social media or stop by the office.

118 Walnut St. Waynesboro PA // 717-762-7123

Local Government

LEGISLATORS

FRANKLIN COUNTY COMMISSIONERS



Dean Horst
Chairman



John Flannery



Robert G. Ziobrowski

272 N. Franklin St., Chambersburg, PA 17201 • 717-264-4125 • www.franklincountypa.gov



Pennsylvania House of Representatives
State Rep. **Paul Schemel**
1402 E. Main Street
Waynesboro, PA 17268
717-749-7384
www.repschemel.com



Pennsylvania State Senator
Retired Colonel
Doug Mastriano
37 South Main Street, Suite 200
Chambersburg, PA 17201
717-264-6100
www.senatormastriano.com



Pennsylvania Governor
Josh Shapiro
Room 225
508 Main Capitol Building
Harrisburg, PA 17120
717-787-2500
www.pa.gov



U.S. House of Representatives
Congressman
Dr. John Joyce
100 Lincoln Way East
Chambersburg, PA 17201
717-753-6344
johnjoyce.house.gov



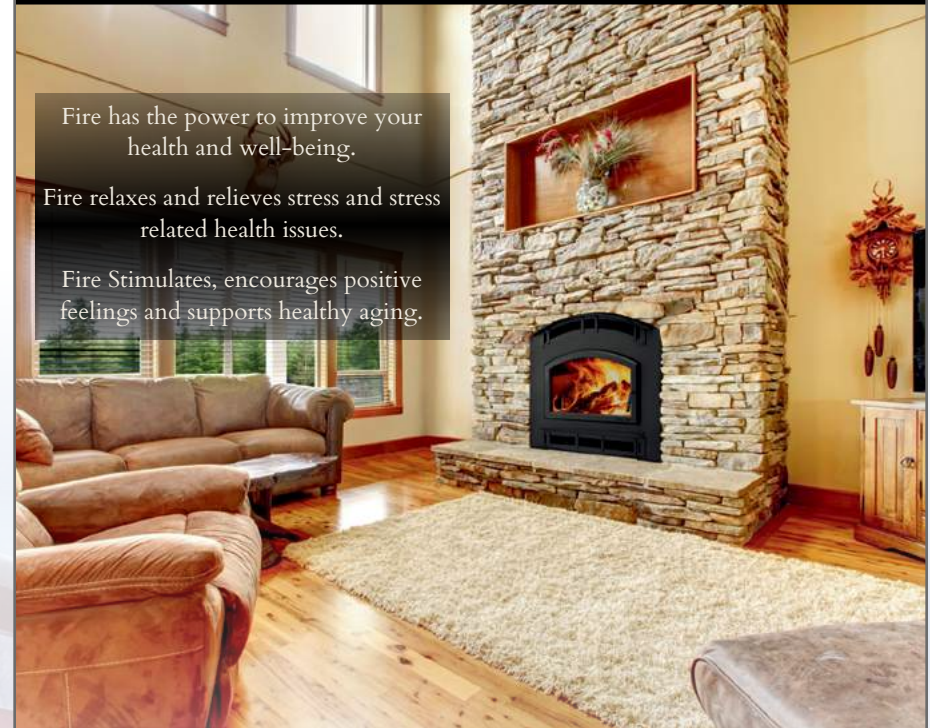
U.S. Senate
Senator **John Fetterman**
320 Market Street
Suite 475E
Harrisburg, PA 17101
717-782-3951
www.toomey.senate.gov



U.S. Senate
Senator **Bob Casey Jr.**
22 S. Third Street, Suite 6A
Harrisburg, PA 17101
717-231-7540
www.casey.senate.gov

Directory was printed prior to elections. For up-to-date information on your local government, visit legis.state.pa.us.

Add beauty and value to your home with a fireplace, stove, or insert



Fire has the power to improve your health and well-being.

Fire relaxes and relieves stress and stress related health issues.

Fire Stimulates, encourages positive feelings and supports healthy aging.

- Trained professionals walk you through the entire process
- Assistance with design and selections
- FREE estimates
- Installation that exceeds your expectations

(717) 765-6941 | ltrushstone.com



Putting Down Roots

Moving can be stressful and confusing. To help your transition to the area, please see the relocation information below.

VEHICLE REGISTRATION NEEDS

Newcomers establishing residency are required to apply for a Pennsylvania title and registration for their vehicle(s) within 20 days of entering the commonwealth. To register, new residents must complete registration forms available to download at dmv.state.pa.us or at any Pennsylvania Department of Transportation Driver's License center.

» PennDOT Driver's License Center

Franklin Center Shopping Plaza
1320 Lincoln Highway East
Chambersburg, PA 17202
800-932-4600 | www.dmv.state.pa.us

» Registration, Titles, Plates and Registration Renewal

CK Auto and Truck *PA and MD
1622 East Main Street
Waynesboro, PA 17268
717-404-9070 | ckautoandtruck@yahoo.com

Hammer Down Customs
11879 Buchanan Trail East
Waynesboro, PA 17268
717- 655-2602 | dustin@hammerdowncustoms.com

Roger's Auto Sales
7480 Anthony Highway
Waynesboro, PA 17268
717-762-2700 | rogersautosales@comcast.net

When filing for vehicle registration(s) make sure you have with you:

- » A valid title for all vehicles you want to register
- » Proof of Pennsylvania insurance with effective and expiration dates
- » Tracing of the vehicle identification number (VIN) or the verification of the VIN by an inspection mechanic or notary public
- » Appropriate title, lien, registration fees and sales tax if applicable.

SALES TAX

If you hold a valid title issued in another state and have owned the vehicle six months or more before moving to Pennsylvania, you will not be required to pay any sales tax when you register your vehicle.

If you hold a valid title issued in another state and have owned the vehicle less than 6 months before moving to Pennsylvania, you will need to provide proof of sales tax paid to the previous titling jurisdiction or remit PA sales tax.

VEHICLE SAFETY INSPECTION

A newly-registered vehicle in Pennsylvania must receive a safety inspection within ten days of the registration date. Inspections are performed at official inspection stations (usually a repair garage or a service station with a repair shop.)

Equipment checks include: lights, brakes, horn, tires, safety belts, exhaust system, mirrors, tag mounting, suspension, turn signals, steering, glazing, wipers, and other major parts of your vehicle.

Inspection fees are posted at official inspection stations. These fees do not include repairs to correct vehicle defects.

TRIDENT
ENTERPRISES

Providing **high-quality fencing materials** for over 35 years.

www.tridentcorp.com

866-290-0244
144 Cleveland Ave. Waynesboro, PA 17268

Our Family of Brands

Easy PET FENCE | Deer Busters | DEER FENCE
TRIDENT FENCE | TRIDENT LOGISTICS | ELECTRIC FENCE COMPANY

EMISSION INSPECTION MAINTENANCE

Pennsylvania is one of many states required by the Federal Environmental Protection Agency to have a vehicle emissions inspection and maintenance program. The I/M program is a key part of the Commonwealth's strategy to improve its air quality.

Call the Drive Clean PA customer hotline at 1-800-265-0921 or visit its website at: www.drivecleanpa.state.pa.us to find out if the county your vehicle is registered in is required to participate in the emissions inspection program.

DRIVER'S LICENSES

New residents are required to obtain a Pennsylvania driver's license within 60 days of establishing a permanent residence. To apply, you must appear in person at your local DMV office to fill out forms and take a vision test. You will need to present:

- » A driver's license from your previous state of residence that is valid or has expired no more than six months earlier
- » Social Security Card

If your license expired more than six months previously, you will have to present your birth certificate and Social Security Card; apply for a Pennsylvania Learner's Permit; and complete all required testing before you receive your license.

Once the license has been issued, you must surrender the license from your previous state of residence to personnel at the DMV.

REAL ID

Beginning Beginning May 7, 2024, Pennsylvanians will need a REAL ID-compliant driver's license/photo ID card, or another form of federally acceptable identification (such as a valid passport or military ID) to board a domestic commercial flight or enter a federal building or military installation that requires ID.

PHOTO IDENTIFICATION CARD

Residents of Pennsylvania 10 years of age and older are entitled to a photo identification card. These cards provide a viable source of identification in lieu of a driver's license. To apply at a license center, you will need to provide proof of name and birth date; two different forms validating your address; social security card; and a check or money order.

What's happening around you?

LocalNews1.org 

SE Franklin & NE Washington Counties

**Getting involved
is important.**

At M&T Bank, we know how important it is to support those organizations that make life better in our communities. That's why we offer our time and resources, and encourage others to do the same. [Learn more at mtb.com/community](https://mtb.com/community).

M&T Bank is proud to support the Greater Waynesboro Chamber of Commerce.

M&T Bank
Understanding what's important®

Equal Housing Lender. ©2020 MGT Bank. Member FDIC.

Lucinda D. Potter

CERTIFIED PUBLIC ACCOUNTANT

Accounting, Payroll, Consulting & Tax Services
for Corporations, Partnerships, LLCs and Individuals

10 WALNUT STREET
WAYNESBORO, PA. 17268-0908
MAILING ADDRESS: PO BOX 908

(717)762-7185



PUBLIC NOTARY

In order for a notary public to notarize a document, the person whose signature is being notarized must sign the document in the notary's presence. Often there is a fee to have a document notarized. The maximum amount a notary public may charge for services is regulated by state law.

» Public Notary

CK Auto and Truck
1622 East Main Street, Waynesboro, PA 17268
717-404-4200 | ckautoandtruck@yahoo.com

Hammer Down Customs
11879 Buchanan Trail East, Waynesboro, PA 17268
717- 655-2602 | dustin@hammerdowncustoms.com

David M. Green Bookkeeping & Tax Service
20 East 6th Street, Suite 303, Waynesboro, PA 17268
717-655-2560 | www.dmgbookkeepingandtaxservice.com

Roger's Auto Sales
7480 Anthony Highway, Waynesboro, PA 17268
717-404-9070 | rogersautosales@comcast.net

YOUR VOTE COUNTS

When you visit the driver's license center, you will have the opportunity to register to vote. If you currently are a registered voter in the state of Pennsylvania, you will not need to re-register unless you have changed your name or address. If you do not register while at the driver's license center, voter registration forms can be printed from votespa.com.

TRASH COLLECTION

If you live in Waynesboro Borough, your trash and recycling automatically is collected weekly because of a contract the borough has with Waste Management. If you are a resident of Mont Alto, Quincy Township, or Washington Township, you will need to make your own arrangement for the disposal of trash and recyclables.

» Washington Township Refuse Transfer & Recycling Center

12721 Buchanan Trail East
Waynesboro, PA 17268
717-762-4413

» Waste Management

9446 Letzburg Road
Greencastle, PA 17225
866-909-4458

» Borough Waste Management

Waynesboro, PA 17268
717-762-2101

COUNTY & LOCAL TAX OFFICES

» Franklin County Area Tax Bureau

443 Stanley Avenue
Chambersburg, PA 17201
717-263-5141 | www.chambersburgwagetax.com

Franklin County Area Tax Bureau is a jointly-operated local government tax collection agency that collects local earned income and local services taxes.

» Mont Alto Borough

Ronald G. Strit, Tax Collector
317 Park Street
Mont Alto, PA 17237
717-749-7869

» Waynesboro Borough

Kara Geesaman, Tax Collector
15 E. Main Street
Waynesboro, PA 17268
717-765-9555

» Quincy Township

Debbie J. Gift, Tax Collector
PO Box 185
Quincy, PA 17247
717-749-7476

» Washington Township

Donald L. Ambrose, Tax Collector
11798 Buchanan Trail East
Waynesboro, PA 17268
717-762-1760

Local Education

PUBLIC SCHOOLS



Learners residing in the greater Waynesboro area have access to a public education in the Waynesboro Area School District. The district educates more than 4,300 students in four elementary schools (K-5), a middle school (6-8), and one senior high school (9-12). The WASD campus is composed of 4 elementary schools: Fairview Elementary, Hooverville Elementary, Mowrey Elementary, and Summitview Elementary, Waynesboro Area Middle School, and Waynesboro Area Senior High School.

The school district offers a comprehensive curriculum to meet the needs of a diverse student population. English Language Arts (ELA), mathematics, science, social studies, world languages, health, art, music, and physical education represent the core K-12 curriculum. Outdoor learning experiences and field trips enhance the elementary and secondary program. Special education services are provided for eligible students. The academic year begins in mid August and ends in May. The Waynesboro Area School District is dedicated to helping all our learners secure their First Choice post secondary goals in the workplace, trade school, college, or the military. We are also very fortunate to have strong parental partnerships that support our schools with fundraising and volunteer services.

» Waynesboro Area School District, Central Office

210 Clayton Avenue
Waynesboro, PA 17268
717-762-1191
www.wasd.k12.pa.us

» Waynesboro Area Senior High School

550 East Second Street
Waynesboro, PA 17268
Phone: 717-762-1191, Ext. 1200
Office Fax: 717-749-5164
Guidance Fax: 717-762-3787
Athletic Office: 717-762-1191 ext. 1220

» Waynesboro Area Middle School

702 East Second Street
Waynesboro, PA 17268
Phone: 717-762-1191, Ext. 1300
Fax: 717-762-6566

» Fairview Elementary School

220 Fairview Avenue
Waynesboro, PA 17268
Phone: 717-762-1191, Ext. 1400
Fax: 717-762-3939

» Hooverville Elementary School

10829 Buchanan Trail East
Waynesboro, PA 17268
Phone: 717-762-1191, Ext. 1500
Fax: 717-762-4222

» Mowrey Elementary School

7891 Tomstown Road
Waynesboro, PA 17268
Phone: 717-762-1191, Ext. 1600
Fax: 717-749-5856

» Summitview Elementary School

840 East Second Street
Waynesboro, PA 17268
Phone: 717-762-1191, Ext. 1800
Fax: 717-762-3764



PRIVATE SCHOOLS:

SAINT ANDREW CATHOLIC SCHOOL

St. Andrew Catholic School, established in 1925, is located in the heart of historic downtown Waynesboro. For parents seeking a religious-based education, St. Andrew Catholic School is devoted to fostering Christian values and academic excellence in a nurturing environment by providing a quality faith-filled Catholic education by a highly qualified staff. All curriculum policies and procedures are established by the Office of Catholic Schools of the Diocese of Harrisburg and are voluntarily consistent with the requirements of the National Common Core Standards. While many schools have removed specialized academic courses, St. Andrew Catholic School continues to offer art, music, library, computer science, physical education, and Spanish.

St. Andrew Catholic School integrates the latest educational technologies in order to enhance the existing academic program. Students have access to a number of valuable resources at their fingertips including Chromebooks, Kindle Fires, iPads, and a fully equipped media lab. Teachers also use Mimio technology in the classroom.

In addition to a strong academic program, St. Andrew Catholic School students participate in a wide array of after school clubs, activities, and community service opportunities. Students in grades four through eight can participate in band and piano instruction. Furthermore, students can be found planting, tending, and harvesting the school garden every fall and spring. Fresh produce is donated back to the community.

St. Andrew Catholic School is accredited by the Middle States Association of Colleges and Schools and the National Catholic Education Association.

» **Saint Andrew the Apostle
Catholic School**
Grades Pre-K–8

213 E. Main Street
Waynesboro PA 17268
717-762-3221
www.saintandrewschool.org



PRIVATE SCHOOLS:

SHALOM CHRISTIAN ACADEMY

Shalom Christian Academy is a PreK through 12th grade school focused on developing lives of consequence in the world for the kingdom of God. From the moment your family chooses Shalom, you are part of our community. Our culture is based on individuals who come together each school year to support, encourage, and energize one another. Within the school setting we provide opportunities for students to develop relationships with teachers and each other. Teachers are a living curriculum, meaning they recognize students are impacted by actions more than words. Families form relationships that extend beyond the school. There is a sense of belonging as students learn together at Shalom. Our goal is to guide students in becoming lifelong learners who are able to engage the world. Students are prepared academically through a comprehensive curriculum that offers a variety of course options. Our living curriculum concept is vital as students form values, beliefs, and habits. Shalom Christian Academy serves more than 680 students in PreK through 12th grade on our 34 acre campus. Another 180 students are served through Growing Tree Preschool at our five satellite locations in Waynesboro, Chambersburg, and Greencastle. Shalom is accredited by the Middle States Association of Colleges and Schools (MSA) and the Association of Christian Schools International (ACSI). We are a member of the Mennonite Schools Council.

» **Shalom Christian Academy,**
Grades PreK–12
126 Social Island Road
Chambersburg, PA 17202
717-375-2223
www.shalomca.com
facebook.com/scaflames
instagram.com/scaflames

Colleges & Universities

Residents living in the area have an exceptional selection of first-rate colleges and universities from which to choose to advance their educational or professional goals.

PENN STATE MONT ALTO

Penn State Mont Alto is a small and inclusive community where students receive a world-class Penn State education in a personalized environment. Our academic offerings cover in-demand fields, including nursing, business, information technology, and project and supply chain management.

We work together to give back to the University, the communities we serve, and the world, whether that's through service-learning, community service, or our entrepreneurship innovation hub, the Mont Alto LaunchBox.

At the Mont Alto campus, students can complete one of nine bachelor's degrees and seven associate degrees, or enroll in Penn State's 2+2 Plan, allowing students to complete their first two years at the Mont Alto campus and then transition to another Penn State campus to complete one of 275+ Penn State majors.

Our 106-acre campus in South Central Pennsylvania provides lots of opportunities for outdoor recreational activities, including hiking, skiing, mountain biking, and kayaking. And, we are positioned for easy access to Harrisburg, Washington D.C., Baltimore and Philadelphia, so a day trip to the city is no more than three hours away.

Our students can be engaged campus citizens by getting involved in any of the 50+ student clubs and organizations on campus, including THON, the largest student-run philanthropy in the world, or playing on one of our four men's and five women's intercollegiate sports teams. So, whether you live on campus or commute, you will find your place in our community!

- » **Penn State Mont Alto**
1 Campus Drive
Mont Alto, PA 17237
Admissions 717-749-6130 | Continuing Education 717-749-4118
montalto.psu.edu



Pamper yourself or someone else!
Schedule Online at
peaceserenityspa.com


Peace and Serenity Spa
230 South Potomac St
Waynesboro, PA.
717-372-1556

- CHOOSE FROM A VARIETY OF MESSAGES
- HOT STONE AND HOT BAMBOO MASSAGE
- SALT SCRUBS AND MUD WRAPS
- CUPPING THERAPY
- REFLEXOLOGY

Book Now 




COLDWELL BANKER REALTY




PAUL GUNDER
Associate Broker, REALTOR®
Cell: 717-729-0200
paul.gunder@cbhomes.com
www.ListWithPaul.com

MATT GUNDER
Associate Broker, REALTOR®
717-765-2566/Cell: 717-729-8027
matt.gunder@cbhomes.com
www.MattGunder.com

RESIDENTIAL BROKERAGE
1814 E Main St. Waynesboro, PA · 717-762-7111



COVENANT FAMILY DENTISTRY

717-762-1515

750 S Potomac Street | Waynesboro, PA 17268 | covenantfamilydentistry.com



Business & Industry

GROWING A VIBRANT BUSINESS COMMUNITY

The Greater Waynesboro Chamber of Commerce is committed to enhancing the greater Waynesboro area by fostering business success, building connections and providing resources for our members and community.

>> Greater Waynesboro Chamber of Commerce

118 Walnut St., Suite 111
Waynesboro, PA 17268
717-762-7123
www.waynesboro.org

DOWNTOWN REVITALIZATION

Mainstreet Waynesboro Inc. is dedicated to restoring downtown Waynesboro to an attractive, commercial district. The organization sponsors several community events throughout the year, many of which attract residents and visitors to the downtown. Annual events include, the Chocolate Excursion, Wedding Expo, Boro Brew Fest, Market Day, Market in the Park, Tree Lighting and Holiday Parade.

>> Mainstreet Waynesboro, Inc.

13 W. Main Street
Waynesboro, PA 17268
717-762-0397 | www.mainstreetwaynesboro.org



We mine metabasalt for use in the roofing, building materials, and agricultural industries.

But we're more than just rocks.



We're livelihoods.

Utilizing high standards of safety to protect our team and the environment, supporting communities through Volunteer Time Off so employees can give back in meaningful ways, and contributing to community initiatives through in-kind or charitable donations.

- 160+ employees at the Charmian Plant in Blue Ridge Summit, PA
- 95% live within 30 miles of the site
- 2+ generations of family members employed at the location

From the roof to the road to the dinner table, our rocks improve lives.
www.specialtygranules.com

A stanīard INDUSTRIES COMPANY

OUR BLEND OF INDUSTRY

The Waynesboro area's blend of agricultural, commercial, industrial, and professional businesses offers a unique atmosphere for a positive business climate and stable workforce. If you choose to locate your business here, you will find the area has a favorable tax climate and easy access to major highways. This makes the Waynesboro area an excellent location for commerce. The workforce includes small, independently-owned businesses to large companies with hundreds of employees. Banking, construction, education, farming, health care, manufacturing, and retailers are only a small sample of the businesses represented here.

» Top Employers

WellSpan	3,650
Manitowoc Crane Group	1,100
Waynesboro Area School District	758
Johnson Controls/Frick Company	400
DL George & Sons	276
TE Connectivity	223

Source: Franklin County Area Development Corp. 2022 County Profile

WAYNESBORO INDUSTRIAL DEVELOPMENT CORP.

The Waynesboro Industrial Development Corporation (WIDC) is a 501(C)6 non-profit corporation that strives to develop, own, lease, and improve property that can be used for the advancement of commercial, industrial, and civic purposes with the goal of promoting, stimulating, and revitalizing commerce, industry, and manufacturing in the greater Waynesboro community.

WIDC is managed by a 15-member volunteer Board of Directors. The Corporation completed the development of a 121 acre Wharf Road Industrial Park in Zullinger, Washington Township. The park features five companies who collectively employ more than 300 workers. For more information on WIDC contact 717-762-7123 or visit waynesboro.org/widc.



CHOCOLATE EXCURSION 1-4 PM • Downtown Waynesboro MARCH 4, 2024	WEDDING EXPO American Legion 10 AM-1 PM MARCH 11, 2024	FIRST Friday! Downtown Waynesboro FUN FOR ALL AGES APRIL thru DEC.	BORO BREW FEST EST. 2015 WAYNESBORO, PA MAY 11, 2024	 <p>Mainstreet Waynesboro, Inc. 13 West Main Street Waynesboro, PA 17268 717-762-0397 Bill@waynesboro.org MainstreetWaynesboro.org</p> <p><i>"...bringing hometown back to downtown"</i></p> <p>Follow us on Facebook and Instagram!</p> 
 <p>To downtown Waynesboro... good things are happening in our community!</p> 				
MAY 25 TO SEPT. 27, 2024 Saturdays 8:30 to NOON WAYNESBORO'S Market at the Park FARMERS MARKET	JUNE 15, 2024 FATHER'S DAY CAR & TRUCK SHOW 9 AM-2 PM	AUG. 2-3, 2024 HP WAYNESBORO WIZARDING WEEKEND DOWNTOWN	OCTOBER 5, 2024 MARKET DAY 9 AM-4 PM	

FRANKLIN COUNTY AREA DEVELOPMENT CORP.

Franklin County Area Development Corp. (FCADC) is a 501(c)(6) nonprofit that works to create a countywide atmosphere that nourishes planned growth and family-sustainable employment opportunities. This is achieved with strategies that focus on retention and expansion of existing employers, the selective attraction of new businesses, and assisting the start-up of new businesses.

Created in 1960, FCADC, since 1986, has facilitated more than 1050 successful projects in Franklin County resulting in more than \$3.4 billion in capital expenditures, and creating and retaining more than 60,000 jobs.

» Franklin County Area Development Corp.

1900 Wayne Road
 Chambersburg, PA 17202
 717-263-8282 | www.fcadc.com



MUSSELMAN & CREAGER, LLP
CERTIFIED PUBLIC ACCOUNTANTS

- » Accounting and Auditing
- » Business and Personal Tax Preparation
- » Bookkeeping
- » Payroll Services

(717)-762-0331 53 N. Broad St., Waynesboro PA
www.musselmanandcreager.com

WE MAKE A BIG DEAL OUT OF SMALL BUSINESS.

Get Financing to Help Your Business Grow.
Whether you need new equipment, working capital, or new commercial property, turn to the lender that's committed to your success. We provide businesses with the right financing solutions at competitive rates.



Mary Cordell
mcordell@patriotfcu.org
717-709-2579

Money Management Services to Help You Focus on Your Business.
Our goal is to enable you to devote your energy to your business, instead of your banking.



patriotfcu.org
INSURED BY NCUA

LOCAL AGRIBUSINESS SPOTLIGHT:

Sugar Hollow Farm Alpacas

Greeted by a herd of Huacaya alpacas, Sugar Hollow Farm Alpacas has a friendly and unique welcoming party that makes guests feel like part of the family. Co-owners, Jay Brown and wife Kathy, are delighted to share their story about how the farm came to be one big happy family. "It all started in 2008 at a late summer fair in Lucketts, Virginia," Jay begins. As the story goes, they stopped by the yarn vendor because Kathy loves to knit. This particular woman sold beautiful, soft, 'and totally irresistible alpaca yarn,' as Kathy puts it. They admired photos of the cute crias (baby alpacas) that had been born two weeks earlier, and learned alpacas are one of the easiest livestock to care for. Jay fondly recalls, "Without realizing it, we had found our retirement plan!"

Sugar Hollow Farm Alpacas is open to the public and encourages school groups to visit. Come learn more about these beautiful smart mammals that do not have top teeth, can eat two pounds of grass a day, hum to communicate, have distinct personalities, and the softest fleece.

» **Sugar Hollow Farm Alpacas**
9955 Masters Road
Waynesboro, PA 17268
717-749-7056 | www.shfalpacas.com



LOCAL AGRIBUSINESS SPOTLIGHT:

Ivy Hill Farm



Fresh is what it's all about at Ivy Hill Farm – which has been in the Martin family for seven generations and continues today under the ownership of John (Steven) and Karen Martin. A pledge to carry on the tradition of growing quality fruits, vegetables, and livestock on the 150-acre farm once known as "Hospitality," here you'll find everything from fruits and vegetables, herbs and bedding plants, to hanging baskets and other garden items. The retail store shelves specialty items such as nuts, jams, jellies and their very own home-made pressed cider. Ivy Hill Farm is about family and they welcome yours to one of their many events throughout the year: Farm Festival and Blessings of the Crops, Cider Press Party, Annual Apple Dessert Bake Off, and Christmas on the Farm. Nestled in the livestock barns you will find their Yorkshire hogs and chickens. Don't forget to check out "Harold" the unofficial trade mark known to all who visit the farm.

» **Ivy Hill Farm**
13840 Smithsburg Pike
Smithsburg, MD 21783
301-824-4658 | ivy-hill-farm.com



NOLAN
Masonry L.L.C.
• BRICK • BLOCK • STONE
(717) 552-4874

We pride ourselves on helping our neighbors save money!

BELL INSURANCE
AN ALERA GROUP COMPANY

- Auto & Homeowners
- Commercial Insurance
- Workers' Compensation
- Employment Practices Liability
- Bonds/Surety
- Farm Insurance
- Group Health
- Group Disability
- Life Insurance
- Medicare Supplement

Get a free quote today | www.BellInsuranceInc.com | (717) 597-1151
110 East Franklin Street, Suite A, Greencastle, PA 17225

Grove-Bowersox
FUNERAL HOME, INC.
Cumberland Valley Crematorium

50 S. Broad St., Waynesboro, PA 17268
Phone: (717) 762-2811
www.bowersoxfuneralhomes.com

JEREMY A. BOWERSOX
Supervisor/Owner

essential
MARKETING CONCEPTS
Providing the essentials to help your business grow!

- Graphic Design
- Logo Creation
- Direct Mailers
- Printing Service
- Branding
- Website Creation
- Content Marketing & SEO
- e-Commerce Marketing
- Social Media Content
- CRM & Email Marketing

LOCATED IN THE AVENUES PROFESSIONAL CENTER
375 Floral Ave, Suite 102B, Chambersburg, PA 17201 • 717-552-2968
www.essentialmc360.com

Area Zip Codes

» Arendtsville.....17303	» Orbisonia.....17249
» Blue Ridge Summit.....17214	» Orrstown.....17244
» Burnt Cabins.....17215	» Orrtanna.....17353
» Cashtown.....17310	» Plainfield.....17081
» Chambersburg.....17201, 17202	» Pleasant Hall.....17246
» Doylesburg.....17219	» Quincy.....17247
» Dry Run.....17220	» St. Thomas.....17252
» Fairfield.....17320	» Scotland.....17254
» Fannettsburg.....17221	» Shade Gap.....17255
» Fayetteville.....17222	» Shady Grove.....17256
» Fort Loudon.....17224	» Shippensburg.....17257
» Greencastle.....17225	» South Mountain.....17261
» Lemasters.....17231	» Spring Run.....17262
» Lurgan.....17232	» State Line.....17263
» Marion.....17235	» Walnut Bottom.....17266
» McConnellsburg.....17233	» Waynesboro.....17268
» Mercersburg.....17236	» Willow Hill.....17271
» Mont Alto.....17237	» Zullinger.....17272
» Newburg.....17240	

Websites of Interest

- » Borough of Waynesboro
www.waynesboropa.org
- » Bureau of Consumer Protection
www.attorneygeneral.gov
- » Center for Entrepreneurial Assistance
www.pabizonline.com
- » Franklin County Area Development
www.fcadc.com
- » Franklin County, PA
www.co.franklin.pa.us
- » Franklin County Visitors Bureau
explorefranklincountypa.com
- » Greater Waynesboro Chamber of Commerce
www.waynesboro.org
- » Letterkenny Army Depot
www.letterkenny.army.mil
- » Mainstreet Waynesboro
www.mainstreetwaynesboro.org
- » PA Chamber of Business and Industry
www.pachamber.org
- » PA Department of Agriculture
www.agriculture.pa.gov
- » PA Department of Education
www.pde.state.pa.us
- » PA Department of Labor and Industry
www.dli.state.pa.us
- » PA Department of Revenue
www.revenue.pa.gov
- » PA Department of Transportation
www.penndot.gov
- » Small Business Administration
www.sba.gov
- » Small Business Development Center
www.ship.edu/sbdc
- » State of Pennsylvania
www.state.pa.us
- » U.S. Census Data
www.census.gov
- » WellSpan Waynesboro Hospital
www.wellspan.org
- » Waynesboro Area School District
www.wasd.k12.pa.us

Thompson Oil
DEPENDABLE YEAR-ROUND FUEL DELIVERY & HVAC SERVICE SINCE 1928
329 WEST NORTH ST
WAYNESBORO PA 17268
717.762.3011 • WWW.THOMPSONOIL.COM
FUEL OIL • INSTALLS • HVAC • SERVICE AGREEMENTS

Living Well

LOCAL HEALTHCARE SPOTLIGHT:

WellSpan Waynesboro



Established in 1922 and located in the southeast corner of Franklin County, WellSpan Waynesboro Hospital has long served its South-Central Pennsylvania community with award-winning care.

One of eight premier hospitals in the WellSpan Health System, WellSpan Waynesboro Hospital's provides a community of 156,000 residents leading-edge inpatient, outpatient and emergent care services, including award-winning stroke care. WellSpan Waynesboro Hospital was one of several WellSpan Health hospitals honored by U.S. News & World Report with the High Performing recognition for 2022-23.

We're committed to improving the health of our community. At WellSpan Waynesboro Hospital, we work together to provide our neighbors with important health-related programs focused on disease prevention and management, early detection screening, and tools and resources to prevent disease through health fairs, seminars, children's events, "fun runs," and more.

» WellSpan Waynesboro Hospital

501 E. Main Street
Waynesboro, PA 17268
717-765-4000
www.wellspan.org

R. THOMAS MURPHY AND ASSOCIATES, P.C.

ESTATE & ELDER LAW ATTORNEYS

R. Thomas Murphy, CELA | Jared S. Childers, CELA



*Focusing on issues affecting Retirees, Seniors
and their Families*

2005 E Main St, Waynesboro, PA 17268
717-762-1032

237 E Queen St, Chambersburg, PA 17201
717-261-0117 717-762-1032 (fax)

www.rthomasmurphy.com

ELEVATION HEALTHCARE

At Elevation Healthcare our main goal is to help you become successful at improving your health. We realize your health is important to you and wanted to offer a place where you can combine all your care needs. Our programs have been developed by our providers to help you improve your health needs. We specialize in women services, medically supervised weight loss programs, wellness programs and full lab services.

» Elevation Healthcare

1647 East Main Street, Waynesboro, PA 17268
717-628-3699 | info@elevationwell.com



**ANTIETAM
PHARMACY**

Your Independent Leader Pharmacy

**Online Prescription
Refills 24/7**

**Delivery Service
Available!**

Hours: Mon.-Fri: 9 a.m.-5:30 p.m.
Sat.: 9 a.m.-2 p.m.; Closed Sun.
David Riley, R. Ph.

730 S. Potomac St., Waynesboro, PA | (717) 762-1164
www.anti-tampharmacy.com



LOCAL HEALTHCARE SPOTLIGHT:

Keystone Health

Keystone Health was founded in 1986 by President and Chief Executive Officer Joanne Cochran to provide quality, seasonal health care to migrant farmworkers in Franklin County. At its inception, Keystone Health was operated by three volunteers who saw 500 patients during the first season. Today, Keystone Health is staffed by a diverse team of professionals who annually care for over 56,000 people. Services include family medicine, behavioral health, dental, pediatrics, internal medicine, women's care, urgent care, audiology, pediatric, occupational and speech therapy and more.

» **Keystone Health**

111 Chambers Hill Drive, Suite 200
Chambersburg, PA 17201
717-709-7900
www.keystonehealth.org



Keystone Pediatrics *Waynesboro*



Dr. Allison
Hickman

Dr. Arnauld
Oreste

Dr. Bethany
Garnand

Accepting New Patients! (717) 387-8060

45 Roadside Avenue, Waynesboro

730 Norland Avenue
Chambersburg, PA 17201

717-575-5035

www.mercyhouseofchambersburg.org

MERCY HOUSE
OF CHAMBERSBURG

Compassionate End-of-Life Care

Retirement Living

Movoto Real Estate blog ranked Waynesboro second on a list of the 10 Best Places to Retire in Pennsylvania. Waynesboro was selected from among 68 towns across the Commonwealth with a population of more than 10,000 based on cost of living, crime rate, amenities per person, weather, and distance to the nearest international airport. Whether you prefer to live in a planned community or you need assisted living care, several exceptional options are available.

THE LELAND OF LAUREL RUN

Located in historic Waynesboro, The Leland of Laurel Run is a privately owned Personal Care residence.

The Leland of Laurel Run offers its residents security, trust, and a sense of belonging while giving seniors who live there the option of independence when they want it and assistance if they need it. In addition, they offer a Memory Care unit designed to give residents with dementia a safe, therapeutic home-like environment where they can still make choices and celebrate accomplishments.

» **The Leland of Laurel Run**

120 W. Main Street
Waynesboro, PA 17268
717-749-0083
www.lelandpersonalcare.com

HEARTHSTONE RETIREMENT HOME AND IN-HOME CARE SERVICES

Hearthstone Retirement Home is a private, not-for-profit, independent facility. We are a 30-bed, Licensed Personal Care Home located in a residential neighborhood in the heart of Waynesboro, PA. Residents thrive in a secure environment with 24-hour staff assistance, plus a registered nurse on-site.

Hearthstone In-Home Care Services is a private, not-for-profit program. We offer non-medical care options such as dressing, bathing, toileting, medication reminders, housekeeping, assistance with ambulation, activities and food preparation. We offer up to 24-hours of care in your own home.

»» **Hearthstone Retirement Home and In-Home Care Services**

102 S Potomac Street
Waynesboro, PA 17268
HRH: 717-762-6313 | HIHC: 717-749-7279 | FAX: 717-765-9414
www.hearthstoneretirementhome.org

OASIS SENIOR ADVISORS

We make senior living simple. Finding and understanding senior living options can be overwhelming and confusing. Oasis Senior Advisors is here to help you. We assist seniors and families to find the solution and senior living option that is the right fit. We will be with you every step of the way to make the process simple and easy. Best of all, there is never a cost for our services.

»» **Oasis Senior Advisors**

32 Ashley Way
Myersville, MD 21773
240-866-0064 | www.oasissenioradvisors.com

QUINCY VILLAGE

Part of Presbyterian Senior Living, Quincy Village is a not-for-profit Life Plan Community located on a 360-acre campus. Quincy Village offers independent living in cottages and apartments; assisted living and personal care; specialized skilled nursing; rehabilitation and dementia care.

»» **Quincy Village**

6596 Orphanage Road, Waynesboro, PA 17268
717-749-2300 | www.quincyvillage.org



In a year full of changes, The Institute is looking forward!

The Institute will continue to serve the community from multiple locations throughout the Cumberland Valley region—with new resources, new joy and new inspiration!

- A large roster of programs and events for all ages.
- Educational programming for area school children, delivered to each elementary school campus, with field-trip style programs once they are safe again.
- Community programs, events and festivals like Jazz Fest, Earth Celebration Day, Youth Fest and more.

Since 1990...*engaging people of all ages with programs and experiences that inform and inspire.*

These experiences also build meaningful connections...to the past, to the natural world and importantly, to one another.



THE INSTITUTE • NatureAndCultureInstitute.org • info@natureandcultureinstitute.org
717-762-0373 | Office: 239-B East Main Street • Waynesboro, PA 17268
Postal address: P.O. Box 971 • Waynesboro, PA 17268



VISITING ANGELS

Visiting Angels provides non-medical, in-home care to seniors in the comfort of their own home. We offer such services as meal preparation, light housekeeping, bathing and dressing assistance, medication reminders, assistance with walking, running errands and shopping, and respite care for families. We offer flexible hourly care, up to 24 hours a day.

When you choose Visiting Angels as your home care provider, they begin by reviewing your loved one's needs. They meet with involved family members and, when necessary, consult with the physician(s) of the care recipient, social workers, hospitals, or nursing home staff. Their goal is to get a complete picture of your loved one's in-home care needs.

» Visiting Angels

10764 Buchanan Trail East
Waynesboro, PA 17268
717-749-0458 | www.visitingangels.com/waynesboro

WAYNESBORO PHYSICAL THERAPY & SPORTS MEDICINE


Waynesboro Physical Therapy & Sports Medicine is a physical therapist owned, private practice located Waynesboro. The staff are dedicated to providing the local community with the highest level of care possible in a compassionate and relaxed environment. Their practice patterns are founded on the most current research with a concentration on exercise and manual techniques to help their clients regain their health, mobility, function and overall wellness.

» Waynesboro Physical Therapy & Sports Medicine

118 Walnut St # 114
Waynesboro, PA 17268
717-655-5681 | www.waynesboroPT.com

Need Physical Therapy?

Specifically ask for the only
LOCALLY OWNED option.



*Friendly Faces, Excellent Outcomes | Free Consultations
Comprehensive Outpatient Physical Therapy Services*

717-655-5681 • www.WaynesboroPT.com

118 Walnut St., Unit 114 • Waynesboro, PA

America's Choice In Homecare.®

Experienced Senior Care For Total Piece of Mind.







Waynesboro Office

10764 Buchanan Trail East
Waynesboro, PA 17268
717-749-0458
VisitingAngels.com/Waynesboro
PA Lic. 22553601

Hagerstown Office

19833 Leitersburg Pike, Suite 8
Hagerstown, MD 21742
301-790-0248
VisitingAngels.com/Hagerstown
MD Lic. 130906

Each Visiting Angels agency is independently owned and operated.



OPERATION
SECOND
CHANCE

Heroes Ridge at
Raven Rock

Heroes Ridge is a 275-acre retreat facility, situated at the top of a mountain, serving our wounded, injured and ill Veterans, First Responders and LEO's injured in the line of duty.

- Tranquil setting on the MD/PA border
- Spectacular views of Ski Liberty, Fairfield, PA, and much more.
- Four cabins, a dining hall, recreation center, nursery, gym, pool and pool house, horses, and ATV's.

Since inception in 2005, OSC has provided just under 16 million dollars in emergency financial assistance and morale related activities.

Donate at <https://operationsecondchance.org>

17870 Harbaugh Valley Road
Sabillasville, MD 21780

OPERATION
SECOND CHANCE
is proud to share
HEROES RIDGE
AT RAVEN ROCK

If you are struggling or lost,
Heroes Ridge at Raven Rock is a
place you can always call home.

Keeping the Faith

Regardless of where you are in your spiritual journey, the greater Waynesboro area is host to numerous churches ready to welcome you into their faith families.

About 400 churches call Franklin County home and the greater Waynesboro area has the highest concentration with 60 congregations represented. A variety of denominations are represented here and congregations come in all sizes. Many offer online live and pre-recorded services as well. Check out the individual webpage for more information.



OTTERBEIN CHURCHWAYNESBORO

A Great Place to Connect with God & Others

- choice of service times -
- children's ministries -
- youth ministries -
- practical Bible teaching -
- contemporary worship -
- local2global ministries -
- nondenominational -

912 S. Potomac Street • Waynesboro, PA 17268 • 717.762.7147
otterbeinchurch.org • facebook.com/otterbeinchurch

Rouzerville Christian Church
 11977 Old Route 16, Waynesboro
 Sunday School 10 AM
 Church Service 11 AM

Scan Facebook QR Code for upcoming events

Join Us for Worship
 We are a Bible believing Community that is Passionate about Making Disciples for Jesus Christ for transformation of the world.

Rouzerville Christian Church



ST. MARY'S EPISCOPAL CHURCH
 Corner of Broad and Second Streets

(717) 762-1930
alpha.diocesepa.org
office@stmaryswayneboro.org

Church Locations

- » **Calvary Assembly of God, Inc.**
P 717-762-5432
116 Snider Avenue
Waynesboro, PA 17268
www.discovercalvary.net
SERVICE TIMES
Sundays 10AM Worship and 6PM
Impact Youth Ministry
Wednesdays 6:30PM Family Night
- » **Christ United Methodist Church**
P 717-762-7011
100 S. Church Street
Waynesboro, PA 17268
www.umchrist.org
SERVICE TIMES
Sundays 8:15AM and 10:45AM,
Sunday School 9:30AM
- » **Evangelical Lutheran Church**
P 717-762-9151
43 S. Church Street
Waynesboro, PA 17268
www.elchome.org
SERVICE TIMES
Sundays 8AM Traditional
and 10:45AM Celebration
Worship Service
- » **Five Forks BIC Church**
P 717-762-2991
9244 Five Forks Road
Waynesboro, PA 17268
ww.ffbic.org
SERVICE TIMES
Sundays 8:00AM Traditional
9:45AM Modern, Sermon Lab 11AM
- » **Grace Baptist Church**
P 717-762-9323
623 North Grant St. Extended
Waynesboro, PA 17268
www.gbcwaynesboro.church
SERVICE TIMES
Sundays 9:30AM and 6PM
- » **Hawley Memorial Presbyterian Church**
P 717-794-2637
14753 Charmian Road
Blue Ridge Summit, PA 17214
www.hawleymemorial.com
SERVICE TIMES
Sunday School 9:30AM
Sunday Worship 11AM
- » **LCBC Church**
P 717-749-3451
13450 Midvale Rd.
Waynesboro, PA 17268
www.lbcchurch.com
SERVICE TIMES
Sundays 9AM and 10:45AM
- » **Otterbein Church & Ministry Center**
P 717-762-7147
912 South Potomac Street
Waynesboro, PA 17268
www.otterbeinchurch.org
SERVICE TIMES
Sundays 8AM, 9:30AM, 11AM

& Service Hours

- » **Restoration Church of God in Christ**
P 717-655-5783
118 Walnut St. Suite 108
Waynesboro, PA 17268
Quazell Young
Quadcity79@yahoo.com
restorationcogic.org
SERVICE TIMES
Sunday School – 9:30AM
Sunday Worship -11:00AM
- » **Rouzerville Christian Church**
P 717 762-3776
11977 Old Route 16
Waynesboro, PA 17268
bluebasser@comcast.net
Rouzervillechristianchurch.org
SERVICE TIMES
Sunday School 10AM
Sunday Worship – 11:00AM
- » **Salem Church of Waynesboro**
P 717-762-8531
4881 Salem Church Rd.
Waynesboro, PA 17268
www.salemchurchpa.org
SERVICE TIME
Sundays 10:20AM -10:35 Salem
Praise! A time of modern worship and
10:45AM Traditional
- » **St. Mary's Episcopal Church**
P 717-762-1930
112 E. Second Street
Waynesboro, PA 17268
www.stmaryswayneboro.diocpa.org
SERVICE TIMES
Sundays 8AM and 10:30AM,
Wednesdays 6:30PM
- » **The Presbyterian Church of Waynesboro**
P 717-762-1841
105 East Main St.
Waynesboro, PA 17268
www.waypres.com
SERVICE TIMES
Sundays 10:45AM
11:30AM Fellowship/Bible Study
- » **Trinity United Church of Christ**
P 717-762-7191
30 W. North Street
Waynesboro, PA 17268
www.tuccwboro.com
SERVICE TIME
Sundays 10:45AM Service
- » **Waynesboro Seventh-Day Adventist Church**
P 717-762-8777
1 State Hill Road
Waynesboro, PA 17268
waynesboropa.adventistchurch.org
Service Times
Sundays 9 AM Sunday School
10 AM Worship Service
6 pm Impact Youth Wednesdays
6:30 - 8 PM Prayer and Share, Royal
Rangers & Girls Ministries

The Great Outdoors

LOCAL PARKS AND RECREATION

There are several municipal parks and recreation areas located in the greater Waynesboro area. For full details on specific parks or areas, please refer to information from the municipality in whose jurisdiction they are located.

Happel's Meadow Wetlands

LOCATION: Along PA Route-16, six miles east of Waynesboro

FEATURES: Happel's Meadow is a 78-acre unique upland wetlands that is being preserved in perpetuity by Washington Township.

Heritage Park in Quincy

LOCATION: 7575 Mentzer Gap Road right next to the Quincy Township offices

FEATURES: Heritage Park is a place where you and your family are able to enjoy the great outdoors. Walk nearly a mile of wooded trails, use the exercise trail and fitness track or sit and enjoy the serene area on one of the benches to listen and watch the wildlife. Available for use is a baseball field and concession stand, along with handicapped accessible restrooms. A Friend of the Quincy Heritage Park sponsorships can be obtained at Quincy Township office with the Park Committee.

Memorial Park in Waynesboro

LOCATION: Between Clayton Avenue and Walnut Street, east of E. Fifth Street

FEATURES: Little League, softball, and baseball fields; four tennis courts; three play areas; small pavilion; basketball court; volleyball court; pickleball court; walking trail (.42 miles) and memorial wall dedicated to locals who have served the country in war.

Mont Alto Recreation Area

LOCATION: Mont Alto Borough at Spruce Street

FEATURES: Two playground areas; two pavilions — one with and one without electric; lighted, shaded, paved walking path; sand volleyball court; and war memorial. Note: Park closed from mid-November through the end of March each year, meaning facilities are not available and pathways are not maintained



**Monterey Pass Battlefield
Park & Museum**

Open April–November
Saturday and Sundays 10am–4pm

14325 Buchanan Trail East, Waynesboro, PA 17268
www.montereypassbattlefield.org
montereypassbattlefield@gmail.com

WALKING TRAILS
OVERLOOK // MUSEUM
TENT CAMPING
PLAYGROUND

Monterey Pass Battlefield Park & Museum

LOCATION: 14325 Buchanan Trail East

FEATURES: The Monterey Pass Battlefield Park is a 125 acre natural, cultural & historical park. It is located in Washington Township, Franklin County, Pennsylvania and preserves a small portion of Pennsylvania's second largest Civil War battle. The history of the area dates back to 1747, when immigrants looking for a new life traveled through the area to Appalachia on the Great Wagon Road. This park is open April to November each year and hosts various live entertainment at their pavilion events. Visitors can take a living history tour, learn about Civil War gardening, schedule a ghost tour and view the relics display. Self driving and walking tours are available. Be sure to schedule your visit with the park and a staff member will drive your party on the 6 person golf cart up to the overlook if you are unable to hike it.

Northside Dog Park

LOCATION: Behind Northside Pool

FEATURES: Two fenced, off-leash areas for dogs based on size. Dogs must be spayed or neutered; may not be aggressive or under four months; must be licensed; and must be registered with the borough.

Northside Pool

LOCATION: 138 Brown Street

FEATURES: Zero-depth entrance; two slides; bubblers and other water features; concession stand; and kiddie pool. Memberships may be purchased from Waynesboro Borough and the pool may be rented for special events.

Otterbein Church Community Park

LOCATION: 13375 Welty Road, Waynesboro, PA 17268

FEATURES: The Otterbein Community Recreation Park includes a pavilion, playground area for children, walking/running trail, softball field, pony league baseball field, and football/soccer field. There is a community center for indoor walking M-F 7:45-9:45. For rentals contact otterbeinchurch.org.

Pine Hill Recreation Area

LOCATION: Washington Township

FEATURES: Three pavilions; one gazebo; two mini pavilions; restrooms; pony league baseball field; Little League/softball field; soccer field; two playgrounds; horseshoe pits; walking trails; sand volleyball court; and Dunlap Family Skate Park.

Red Run Park

LOCATION: 12143 Buchanan Trail East, Waynesboro, PA 17268

FEATURES: Man-made lake; two playgrounds; restrooms; concession stand; five picnic pavilions; Red Run Express miniature train for children; 9/11 Tribute; music pavilion featuring live country, blue grass, and gospel concerts Sunday afternoons from the beginning of June through the end of September.

The Institute

LOCATION: Postal address: P.O. Box 971, Waynesboro, PA 17268

717-762-0373 | natureandcultureinstitute.org | info@natureandcultureinstitute.org

FEATURES: Founded in 1990, The Institute provides curriculum-based environmental education and cultural history programs to thousands of school students annually. Community Learning programs, Naturalist Discovery Series and field trips are also offered for people of all ages.

The Institute serves the community in the Cumberland Valley region with programs at Pine Hill Recreation Area, Antietam Meadow Park, Red Run Park, Michaux Forest, Monterey Pass and other satellite locations.

Thousands attend The Institute's annual events—Kite Fly, SOAR bird walks, Winter Solstice Celebration, plus Youth, Jazz, and Earth Day festivals, along with fundraisers like the Recycle Reuse Yard Sale, Bay Supper, Salamander Scramble 5K and the Pumpkins and Pippins Festival.

The Institute also supports citizen scientist activities such as stream monitoring and offers high school and university student internships.

Renfrew Museum and Park

LOCATION: 1010 East Main Street, Waynesboro, PA 17268

FEATURES: "Walk back in time" to a 200-year-old Pennsylvania German Farmstead situated on 107 scenic acres. Tour the restored Museum House, beautifully appointed with early furniture and decorative arts. Visitors Center houses largest collection of John Bell Family pottery on public display with original molds, plus exhibits of Franklin County longrifles and antique tradesmen's tools. Explore the grounds; discover more historic buildings, period gardens, and breathtaking vistas. Park offers 23 walking trails and picnic area. Annual signature events: Opening Day, Farmstead Days, Oktoberfest, and Christmas on the Farm. Regular programming includes summer concert series, tours, historic demonstrations, workshops, presentations, and more!

Rofando Woods Park

LOCATION: 9 Charmain Road, Waynesboro, PA 17268

FEATURES: Recreational park in the heart of Monterey Pass Battlefield featuring a playground, spring house, and pavilion.

Rotary Park

LOCATION: Intersection of West Ninth Street and Anthony Avenue

FEATURES: Fitness trail, pavilion, basketball court, and restrooms.

Rotary Park was created and funded by the Rotary Club of Waynesboro.



PENNSYLVANIA STATE PARKS

The greater Waynesboro area and its neighboring communities offer outdoor enthusiasts a multitude of scenic recreational opportunities. For more information, find the parks at: www.dcnr.state.pa.us.

Appalachian Trail



During warmer summer months, it's not uncommon to spot a hiker in rugged boots and an oversized backpack who has traveled into town to restock supplies or recharge. The greater Waynesboro area is just off the beaten path of the Appalachian Trail, making it convenient for residents and visitors to enjoy an afternoon or several days hiking through mountainous terrain with great views.

Buchanan's Birthplace State Park



Found off of PA Route 16 in a gap of the Tuscarora Mountain range, Buchanan's Birthplace State Park pays homage to the 15th president of the United States (1857-1861), James Buchanan. The park offers two picnic pavilions, picnic tables, restrooms and drinking water in addition to the president's memorial.

Caledonia State Park



Located along U.S. 30 between Chambersburg and Gettysburg, Caledonia State Park offers 1,125 acres natural landscape and trails accented by camping and picnicking facilities as well as a pool. The park is ideal for fishing and hiking. The park also is host to an 18-hole par 68 golf course, the Cathedral in the Pines, and the Totem Pole Playhouse.

Cowans Gap State Park



A 1,085-acre park in neighboring Fulton County, one of this park's main attractions is a 42-acre lake surrounded by a 500-foot sand beach. The lake is a popular spot for swimming and boating in warmer seasons and ice skating or ice fishing during the winter. Additionally, the park offers several picnic pavilions; 630-acre hunting and camping sites.

Michaux State Forest



Named for French botanist Andre Michaux, who discovered and named numerous plants during the 18th century, Michaux State Forest covers more than 85,500 acres in the South Mountain area of Adams, Cumberland, and Franklin counties.

Mont Alto State Park



One of the oldest parks in the state park system, Mont Alto State Park is recognized for its unique bell-shaped pavilion. The park offers two picnic areas with tables and two pavilions, mountain roads appropriate for short hikes, and trout fishing. During the winter, those who snowmobile can enjoy the convenience of restrooms, parking, a loading/unloading ramp, and access to snowmobile trails at neighboring Michaux State Forest. Trails are open in late December after deer season has ended.

Pen Mar Park

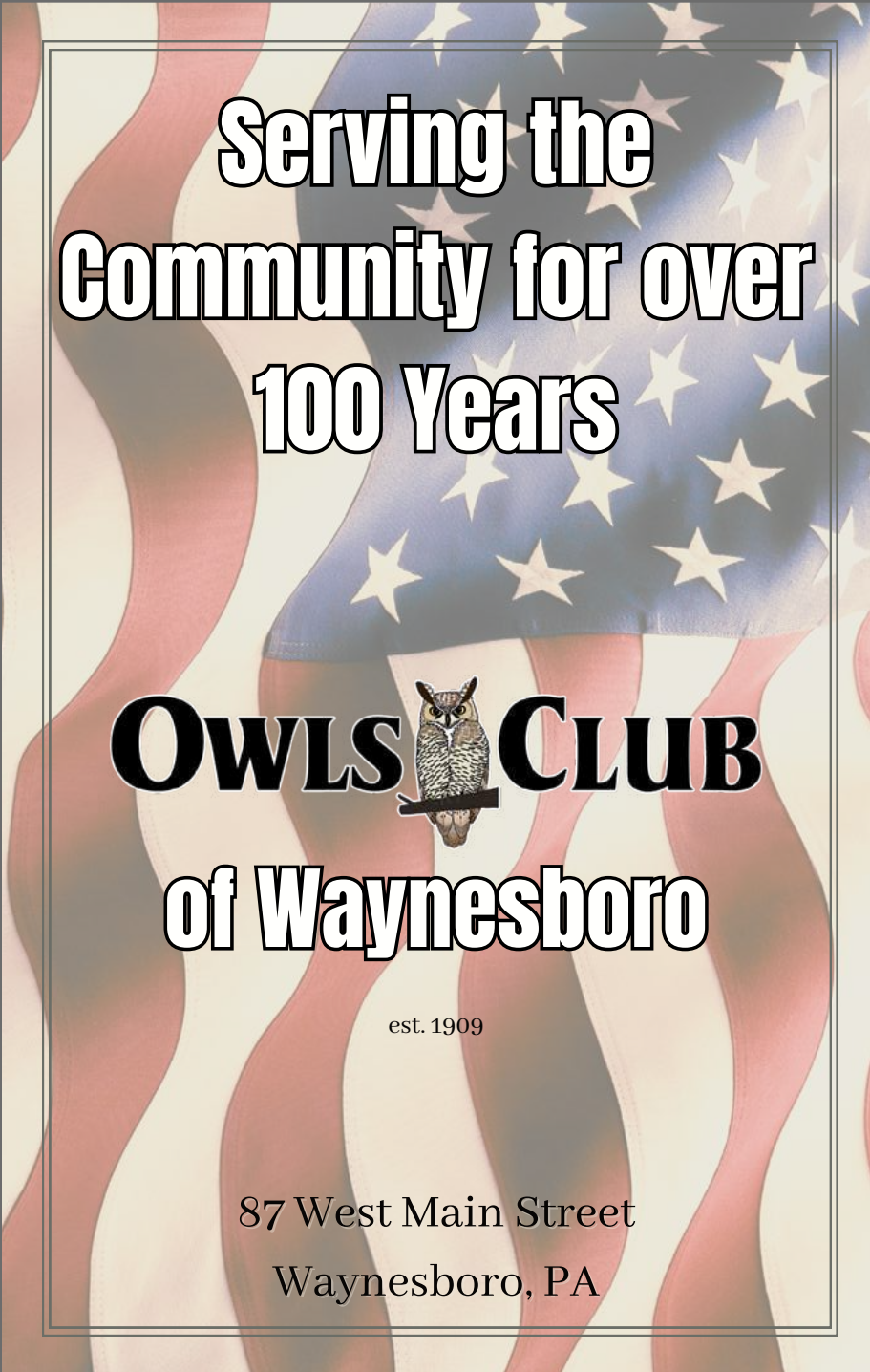


Located just over the Mason Dixon Line in neighboring Cascade, MD, at an altitude of 1,400 feet, Pen Mar Park gives visitors one of the best sprawling views of the greater Waynesboro area available. The park is a popular destination for people who enjoy dancing to the sounds of big bands. Live bands play as part of the Pen Mar Park Music Series from June through September. The park also offers a playground, picnic tables, and pavilions.




AREA PARK LOCATIONS/CONTACTS

- » **Antietam Meadow Park**
11881 Rinehart Drive
Waynesboro, PA 17268
www.washtwp-franklin.org/parks-recreation
- » **Happel's Meadow Wetland Preserve**
Along PA Route 16
www.washtwp-franklin.org/parks-recreation
- » **Heritage Park at Quincy**
7575 Mentzer Gap Road
Waynesboro, PA 17268
www.quincytwp.org
- » **Mont Alto Recreation Area**
Between Constitution Avenue and Spruce Street
Mont Alto, PA 17237
717-749-5808
- » **Monterey Pass Battlefield Park and Museum**
14325 Buchanan Trail East
Waynesboro, PA 17268
montereypassbattlefield@gmail.com
www.montereypassbattlefield.org
- » **Northside Park Pool**
138 Brown Street
Waynesboro, PA 17268
717-762-7928
www.waynesboropa.org/northside-pool
- » **Otterbein Church Community Park**
13375 Welty Road
Waynesboro, PA 17268
717-762-7147
www.otterbeinchurch.org
- » **Pine Hill Recreation Area**
12684 Mentzer Gap Road
Waynesboro, PA 17268
717-762-3128
www.washtwp-franklin.org
- » **Red Run Park**
12143 Buchanan Trail East
Waynesboro, PA 17268
717-762-3128
www.washtwp-franklin.org/parks-recreation
- » **The InSTITUTE**
P.O. Box 971
Waynesboro, PA 17268
717-762-0373
www.natureandcultureinstitute.org
- » **Renfrew Museum & Park**
1010 E Main Street
Waynesboro, PA 17268
717-762-4723
www.renfrewmuseum.org
- » **Rotary Park at Wayne Gardens**
West 9th Street
Waynesboro, PA 17268
717-762-2101
www.waynesboropa.org/rotary-park
- » **Rolando Woods Park**
9 Charmain Road
Waynesboro, PA 17268
717-762-3128
washtwp-franklin.org/parks-recreation
- » **Waynesboro Memorial Park**
220 Memorial Park Drive
Waynesboro, PA 17268
717-762-2101
www.waynesboropa.org/memorial-park



**Serving the
Community for over
100 Years**

OWLS  CLUB
of Waynesboro

est. 1909

87 West Main Street
Waynesboro, PA

Explore
Franklin County, PA

FRANKLIN COUNTY | PA
Great moments are waiting.

Discover history, arts, recreation, dining, culture, events, exhibits and more at the 11/30 Visitors Center on the square in downtown Chambersburg. There's LOTS to do in *Franklin County!*

Franklin County Visitors Bureau
11/30 Visitors Center
15 S Main St | Chambersburg, PA 17201

ExploreFranklinCountyPA.com

DO | DINE | STAY

TOURISM SPOTLIGHT

Welcome to Franklin County!

Welcome to Franklin County—the crossroads of the county at Routes 11 & 30 and home to America’s Main Streets. Waynesboro, one of the gateway communities of Franklin County, is a destination for history, arts, recreation, natural beauty, fresh foods and warm hospitality. It has small town charm, boutique shopping, amazing art, and beautiful architecture.

Come explore Franklin County PA with wide open spaces, delightful downtowns, excellent fresh foods, and lots of relaxation and recreation. Try a food or dining tour. Discover historic sites and covered bridges. Check out the Appalachian Trail or Monterey Peak Trail. Go hiking, biking, or birding in 36 local parks and four state parks. Go golfing, enjoy skiing, or simply take in great views. For more information, go online at ExploreFranklinCountyPA.com or call 866.646.8060. Your great moments are waiting.



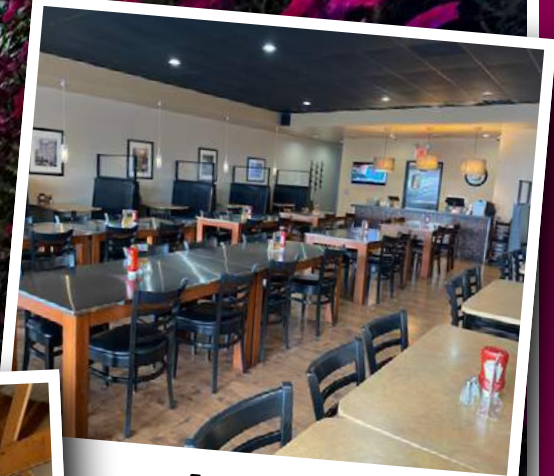
DO | DINE | STAY

There is nothing like the charm of a small town full of rural heritage, beautiful architecture, an abundance of activities and quaint locally owned shops and restaurants.

A walk through Waynesboro is like stepping into a Hallmark movie. Whether the season is that of the fall foliage, winter wonderland, colorful spring or the summer breeze, you will feel right at home in this welcoming town.

Take a stroll down Main Street and visit the locally owned shops where you will find everything from books and unique gifts to teas, coffee, chocolates and cigars, all nestled amongst artisans, art galleries and antique shops. As you travel throughout the greater Waynesboro area be sure to stop and visit Monterey Pass Battlefield Park and Museum, the 9/11 tribute at Red Run Park, Renfrew Museum and Park and Mont Alto State Park which is one of the oldest parks in Pennsylvania. If you are feeling energetic take a hike on the Appalachian Trail.

You won't find a weekend that there isn't something going on. Whether it is strolling through the farmers market, listening to musicians downtown or one of the many yearly events like the Pumpkin Festival, Tree lighting or Summer Jubilee, you and your family will have every opportunity to stay engaged with the community.



Cafe Del Sol



Postmasters Coffee and Bakery



Main Street Family Diner

John Briggs
LANDSCAPE PHOTOGRAPHER

AREA GOLF COURSES

Waynesboro Country Club

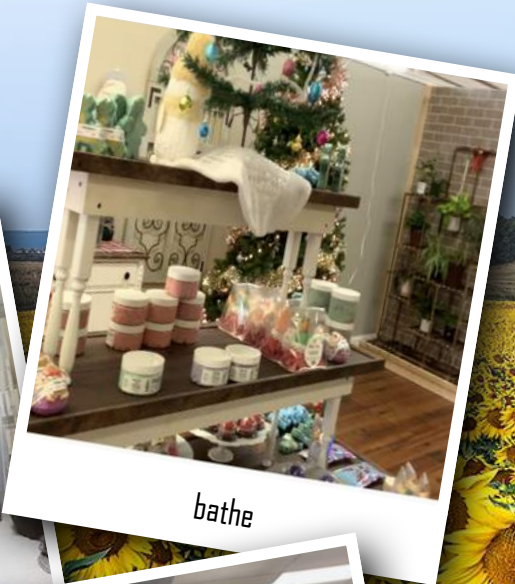


The Waynesboro Country Club was formed in 1928 as a non-profit club, and has remained open to all individuals regardless of race, religion, or creed. Their mission has been to maintain a membership size that will allow maximum usage of the facilities without the need of tee times.

» **Waynesboro Country Club**
11000 Country Club Road
Waynesboro, PA 17268
717-762-2602
www.waynesborocc.com



BKM Designs




bathe



Mason Dixon Creations



Barrel & Lace



Scott & Associates
CPA, PC

- Tax Preparation Services for Individuals, Business(s), Non-Profit, Estates & Trusts
- Accounting, Bookkeeping and Payroll Services
- Retirement Planning

45 Walnut Street
Waynesboro, PA 17268
717-765-8515

107 East Baltimore St.
Greencastle, PA 17225
717-597-1995

Email: clientsupport@clscpapc.com

SHOWALTER & MILLER *Serving the community from Downtown Waynesboro for over 35 years.*

CERTIFIED PUBLIC ACCOUNTANTS

- Services from Corporations, Partnerships and LLCs
- Non-Profit Audits and Federal/State Filings
- Personal Income Taxes
- Retirement and Estate Planning
- Small Business Payroll and Accounting

(717).762.8116
42 East Main Street • Waynesboro, PA


DO | DINE | STAY

Nothing brings people together like good food and drinks. Whether you are in search of a quick meal at a national chain, home-style fare from a diner or an upscale dining experience, the greater Waynesboro area won't disappoint. Try the Main Street Family Diner, Parlor House or Velvet Café for a home-style meal. Enjoy fresh specialties available at Café Del Sol and Montezuma's Mexican Restaurant. Got a sweet tooth? Be sure to stop by Antietam Dairy and Dairy Queen or call Nanner Bananer Bakery for all your baked good needs. Looking to start your day off right.....we've got a plethora of specialty coffee shops including, Brio Coffeehouse, Dunkin Donuts, Lenca Coffee Roasters and Postmasters Coffee and Bakery.

LIBATIONS


If you are looking for a place to relax after work or hangout with friends, we have got some hot spots that won't disappoint. Blondie's, Michaux Brewing Company, Rough Edges Brewing and Trigger's Table and Taproom each offer their own unique charm while serving a variety of food, beer, wine, and spirits. Be sure to check out their socials for a listing of their special events and live entertainment.

60 YEARS OF GUIDANCE YOU CAN COUNT ON



SEK
CPAs & ADVISORS

804 Wayne Avenue
Chambersburg, PA 17201
717-263-3910 | sek.com



CAMP HILL | CARLISLE | CHAMBERSBURG | HAGERSTOWN | HANOVER | YORK



WAYNESBORO AREA YMCA
HERE FOR THE COMMUNITY SINCE 1915
THEN, NOW, AND ALWAYS

Youth Development, Healthy Living, Social Responsibility

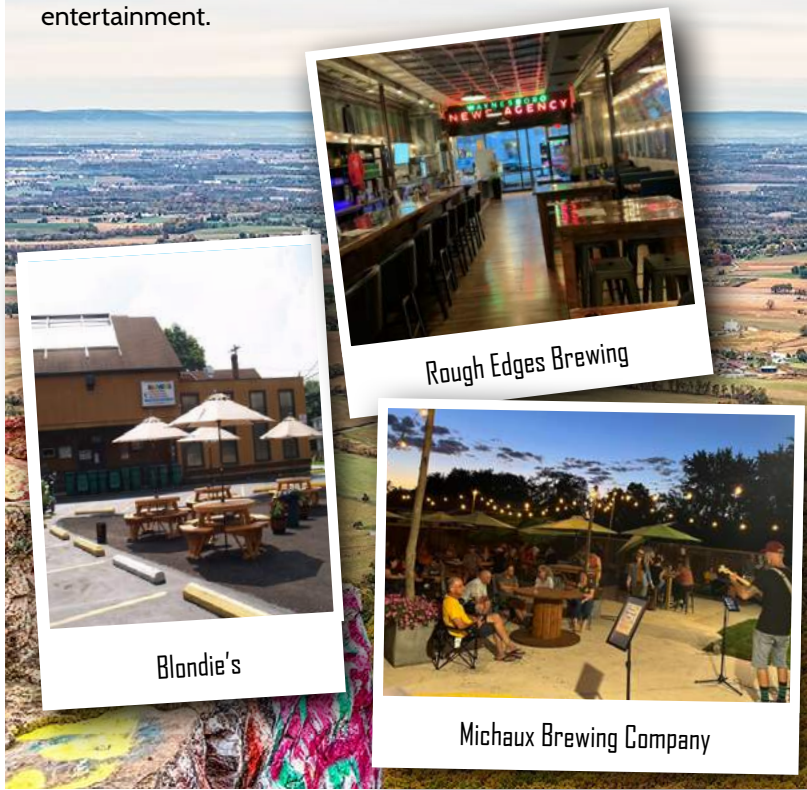
» JOIN TODAY
waynesboroymca.org 717-762-6012
810 East Main Street, Waynesboro, PA



Need a little
CLARITY?
Crystal-clear accounting and guidance



OCKER
accountants & consultants
ockeraccounting.com



CermakTech
1-888-4-CERMAK
CermakTech.com

The IT Department For All Your Business And Computer Solution Needs

WAYNESBOROWATERWORKS.COM
324 W. MAIN ST.
WAYNESBORO, PA 17268
717-762-6677

Don't forget to use your Chamber Card for a \$1 discount!

MONTEREY PASS: PUB & EATERY
DINNER: FRIDAY & SATURDAY
PUB HOURS: 4:30PM - 9:30PM

SEE MONTEREY PASS 2.0 ON FACEBOOK FOR FEATURED MENU ITEMS

11723 OLD ROUTE 16, WAYNESBORO, PA 17250
717-387-5418
ON THE CORNER OF PEN MAR ROAD & OLD ROUTE 16

DO | DINE | STAY

There is so much to do in the greater Waynesboro area that you may want to extend your visit to take in all the sites and atmosphere. Whether you are visiting family or friends, here for work or pleasure we suggest you plan a stay with The Amberson House Bed & Breakfast or Cobblestone Hotel & Suites. You will find high-quality, affordable accommodations to suit every traveling need and budget.

» **The Amberson House Bed & Breakfast**

128 W Main Street
Waynesboro, PA 17268
717-762-8112
theambersonhouse.com

» **Cobblestone Hotel & Suites**

12695 Washington Twp Blvd
Waynesboro, PA 17268
717-765-0034
staycobblestone.com



The Amberson House Bed & Breakfast



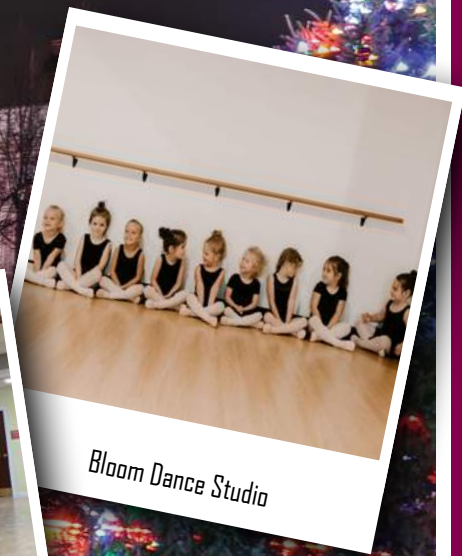
Cobblestone Hotel & Suites

HISTORY, ARTS AND CULTURE

- » **A & B Dance Dimensions**
44-A E. Main Street
Waynesboro, PA 17268
717-762-4456
abdancedimensions.com
- » **Alexander Hamilton Memorial Free Library**
45 E Main Street
Waynesboro, PA 17268
717-762-3335 | ahmfl.org
- » **Arts Alliance of Greater Waynesboro**
32 W Main Street
Waynesboro, PA 17268
717-655-2915 | artsalliancegw.org
- » **Bloom Dance Studio**
218 W. 5th Street
Waynesboro, PA 17268
(240) 500-6009
bloomdancestudio.com
- » **Monterey Pass Battlefield Park & Museum**
14325 Buchanan Trail East,
Waynesboro, PA 17268
717-762-3128
montereypassbattlefield.org
- » **The Ceramic Arts Center of Waynesboro**
13 S. Church Street
Waynesboro, PA 17268
717-372-7906 | ceramics-nccs.org
- » **The Institute**
P.O. Box 971
Waynesboro, PA 17268
717-762-0373
natureandcultureinstitute.org
info@natureandcultureinstitute.org
- » **Renfrew Museum and Park**
1010 E. Main Street
Waynesboro, PA 17268
717-762-4723
renfrewmuseum.org
- » **Waynesboro Community Concert Association**
P.O. Box 785
Waynesboro, PA 17268
717-609-6853
waynesborocommunityconcert.org



Alexander Hamilton Memorial Free Library



Bloom Dance Studio

**HAVE MONEY
CONVERSATIONS
WITH SOMEONE
YOU TRUST.**

Member
FDIC



**F&M
TRUST**
fmtrust.bank



MARTZ
PLUMBING ▸ HEATING ▸ AIR CONDITIONING

717-762-6115 216 W 5th St, Waynesboro, PA 17268

Photo © John Irwin

DSS LAW **DICK, STEIN, SCHEMEL, WINE & FREY, LLP**
ATTORNEYS AT LAW

Committed to Finding the Right Solution For You

10440 Buchanan Trail East | Waynesboro
717-762-1160
www.DSSLawyers.com

NEW LOCATION



**Wills & Trusts | Estate Planning
Personal Injury | Civil Litigation
Real Estate | Zoning/Subdivision
Corporations and Business Planning
Workers Compensation | Bankruptcy***

*We are a debt relief agency. We help people file for relief under the bankruptcy code.

LAW OFFICES OF JEFFREY S. EVANS

- * Civil Litigation
- * Corporation & Business Law
- * Criminal Law
- * DUI & Traffic Defense
- * Marital & Family Law
- * Personal Injury & Property Damage
- * Real Estate
- * Wills, Estates & Estate Planning Law

**2021 East Main Street
Waynesboro, PA 17268
(717) 762-1415 or (717) 263-5001
www.jevanslaw.net | www.buchanansettlements.com**

BUCHANAN SETTLEMENT SERVICES
Dawn E. Monn, Title Agent
Nathan C. Bonner, Title Agent/Office Manager

Professional Title and Settlement Services for Purchases and Refinances
(Settlements at convenient times and locations.)

Real-Kill Termite & Pest Control LLC
Protectors of the Environment

Residential | Commercial | Industrial
33 E. Main St., Waynesboro, PA
www.realkillpestcontrol.com • realkilltermite@gmail.com

WAYNESBORO (717) 762-8448

CHAMBERSBURG (717) 267-3330

GETTYSBURG (717) 337-2741

HAGERSTOWN (301) 733-8833

FREE ESTIMATES!

Community Resources

If you or a loved one is experiencing a life-threatening emergency requiring immediate attention, **PLEASE CALL 911**. For all other emergency service inquiries, use the phone numbers provided below.

EMERGENCY

- » **Blue Ridge Fire & Rescue**
13063 Monterey Lane
Blue Ridge Summit, PA 17214
717-749-2662
- » **Waynesboro Area Advanced Life Support –**
501 E. Main St.
Waynesboro, PA 17268
717-762-1283
- » **Mont Alto Ambulance Squad**
603 S. Main St.
Mont Alto, PA 17237
717-749-3453
- » **Waynesboro Police Department**
57 E. Main St.
Waynesboro, PA 17268
717-762-2132
- » **Mont Alto Volunteer Fire Co.**
571 S. Main St.
Mont Alto, PA 17237
717-749-5151
- » **Washington Township Police Department**
11798 Buchanan Trail East
Waynesboro, PA 17268
717-762-1447
- » **Waynesboro Ambulance Squad**
603 W. Main St.
Waynesboro, PA 17268
717-762-5338



Does *your* business insurance earn dividends? Ours does.

Chamber 

Want to know more?

Call this chamber member insurance agency today!

Bell Insurance, Inc.
717-597-1151

Blue Ridge Risk Partners
717-762-3147

Strickler Agency, Inc.
717-263-4179



PENN NATIONAL
INSURANCE

Feel Secure®

www.PennNationalInsurance.com



CHILD CARE

Public, private, and religious institutions throughout the area provide a variety of day care programs for children as young as six weeks of age through preschool, as well as before- and after-school programs for older children.

- » **Noah's Ark Christian Child Care Center**
100 S. Church Street
Waynesboro PA 17268
717-765-8146
www.facebook.com/noahsark40
- » **Today's Learning Center and Child Care**
118 Walnut St., Suite
Waynesboro, PA 17268
717-655-2409
www.tnslearningcenter.com
- » **Waynesboro Early Learning Center**
1801 E. Main St.
Waynesboro, PA 17268
717-762-9711
- » **Waynesboro Area YMCA**
810 E. Main Street
Waynesboro PA 17268
717-762-6012
waynesboroymca.org

MEETING LOCAL NEEDS

Waynesboro Community and Human Services (WC&HS) provides a variety of programs to ensure the needs of qualifying, low-income community members are met. Efforts extend from the Waynesboro Area to Greencastle-Antrim school districts.

WC&HS services include a food bank; clothing bank; diaper bank; emergency financial assistance; information and referral; community health nurse; and counseling.

In addition to its list of services, WC&HS sponsors a yearly community Thanksgiving meal, delivering meals to shut-ins as needed, and organizes an annual Christmas boxed meal program and holiday adopt-a-family effort. These additional programs make certain low-income families and children receive warm meals and presents during the holiday season.

- » **Waynesboro Community & Human Services**
123 Walnut Street
Waynesboro PA 17268
717-762-6941
Community Nurse:
717-860-3081
www.wchs-pa.org

LOCAL FOOD & PAPER PRODUCTS PANTRIES

- » Bountiful Blessings
717-765-4170
- » Faith United
Methodist Church
717-762-2819
- » Fairview Avenue
Brethren in Christ
717-762-3079
- » Five Forks Brethren
in Christ Church
717-762-2991
- » Greencastle
Presbyterian Church
717-597-8333
- » Help Hotline/Church of
the Transfiguration
717-762-9050
- » Loving Hearts
Dry Goods Pantry
717-762-6224
- » The Lunch Place
717-762-7042
- » South Central Community
Action Program
717-263-5060
- » Susannah's Pantry
(Emergency Food Pantry)
717-762-7042

FOOD SERVICE ASSISTANCE

- » Blue Ridge Summit
Help Hotline
717-794-2229
- » Chambersburg Meals on Wheels
717-263-7228
- » Salvation Army Soup Kitchen
717-264-6169
- » Shippensburg Meals
on Wheels
717-261-6615
- » Women, Infants and
Children (WIC)
717-762-2143 or 717-263-0802

COMMUNITY MEALS: LUNCH

- » Salvation Army Lunch
159 Lincoln Way West
Chambersburg, PA
Sundays thru Wednesdays, and
Fridays
11:00am – 12:00pm
- » St. Seraphim
Orthodox Center
148 Lincoln Way West
Chambersburg, PA
Thursdays & Saturdays
10:00am – 1:00pm
- » The Lunch Place
100 S. Church Street
Waynesboro, PA
11:30am – 12:30pm
- » Memorial Lutheran Church
34 E Orange Street
Shippensburg, PA
1st Sunday at 12:00pm

COMMUNITY MEALS: DINNER

- » Chambersburg Church
of the Brethren
260 S. 4th Street
Chambersburg, PA
Wednesdays at 5:30pm
- » Falling Spring
Presbyterian Church
221 N Main Street
Chambersburg, PA
Sundays at 5:00pm
- » First United Methodist Church
225 S 2nd Street
Chambersburg, PA
Thursday at 5:30pm
- » Christ United Methodist
47 E King Street
Shippensburg, PA
2nd & 4th Thursdays
5:00pm – 6:15pm
- » Grace United
Church of Christ
121 E Orange Street
Shippensburg, PA
3rd Monday at 5:30pm
- » Messiah United Methodist
30 S Penn Street
Shippensburg, PA
2nd & 4th Tuesdays
5:30pm
- » Prince Street Church of the
United Brethren in Christ
20 N Prince Street
Shippensburg, PA
1st & 3rd Thursdays
Fellowship Hall at 5:30pm

EMERGENCY SHELTER AND TRANSITIONAL HOUSING

- » CandleHeart Ministries
717-263-5179
- » Carlisle CARES
717-249-1009
- » Cold Weather
Drop-In Shelter
195 Loudon, Street
Chambersburg, PA
December – April
717-262-2143
- » Franklin County
Homeless Shelter
223 S Main Street
Chambersburg, PA
717-267-3669
- » Maranatha Transitional
Housing
717-261-1708
- » Waynesboro New Hope
Shelter
717-762-5840
- » Women-In-Need Shelter
717-264-3056

MENTAL HEALTH SERVICES

- » Catholic Charities
717-263-3765
- » Child Adolescent Service
System Program (CASSP)
717-709-2307
- » Children's Aid Society
717-263-4159

- » **Crisis Intervention**
717-264-2555, 866-918-2555
- » **Contact Helpline**
Listening Line
800-923-4616
- » **Mental Health**
Association Help Line
717-264-2916

CHILDREN AND FAMILY

- » **Adoption Horizons**
717-249-8850
- » **ARC of Franklin County**
717-264-4390
- » **Boys & Girls Club**
717-261-5761
- » **Easter Seals of**
Chambersburg
717-264-7578
- » **Family Literacy**
717-504-4459
- » **Franklin County Head Start**
717-263-8019

COUNSELING AND OUTPATIENT PROGRAMS

- » **Brook Lane**
800-342-2992, 301-733-0330
- » **CenterPoint Counseling**
& Consulting
717-267-2081
- » **Frances Leiter Center**
717-264-8552

- » **Franklin Family Services**
717-267-1515
- » **Greencastle Family Practice &**
Psychological Services
717-597-0095

DETOX AND SUBSTANCE ABUSE SERVICES

- » **Franklin & Fulton County**
Drug & Alcohol Programs
717-263-1256
- » **Pyramid Healthcare, Inc.**
888-694-9996
- » **Roxbury Treatment Center**
800-648-4673
- » **White Deer Run**
866-769-6822

OUTPATIENT FACILITIES

- » **Dohi Center for Wellbeing**
717-473-4980
- » **Laurel Life**
717-261-1426
- » **PA Counseling Services**
717-261-1426
- » **Pyramid Healthcare**
717-261-1900
- » **Roxbury Treatment Center**
800-648-4673

SUPPORT GROUPS

- » **Al-Anon/Alateen (York)**
888-425-2666
- » **Alcoholics Anonymous**
800-296-9289
- » **Gambler's Anonymous**
855-222-5542
- » **Mothers Against Drunk**
Driving
800-275-6233
- » **Narcotics Anonymous**
800-445-3889
- » **Smoking Cessation Program**
717-264-1470

PREGNANCY SERVICES

- » **Real Alternatives**
888-543-3243
- » **Pregnancy Counseling Helpline**
800-537-2229
- » **Pregnancy Ministries**
Chambersburg: 717-267-3738
Greencastle: 717-597-2447
Shippensburg: 717-532-4446
Waynesboro: 717-655-5603
- » **Waynesboro Hospital Family**
Birthing Services
717-765-4000
- » **Women, Infants and**
Children (WIC)
Chambersburg: 717-263-0802
Waynesboro: 717-762-2143

RESOURCEFUL PHONE NUMBERS

- » **Baby Safe Haven**
888-510-BABY
- » **Centers for Disease**
Control (CDC)
800-CDC-INFO
- » **Child Abuse**
Hotline/ChildLine
800-932-0313
- » **Coalition Against Rape**
800-692-7445
- » **Domestic Violence Hotline**
800-799-7233
- » **Elder Abuse Hotline**
800-498-8505
- » **Franklin County Area Agency**
on Aging/Elder Abuse
717-263-2153
800-642-6990
- » **Franklin County Children**
& Youth Services
717-263-1900
- » **National Eating**
Disorders Association
800-931-2237
- » **National Human**
Trafficking Center
- » **National Runaway**
Switchboard
800-RUNAWAY
- » **National Suicide**
Prevention Lifeline
800-273-8255
- » **WIN Victim Services**
717-264-3056, 800-621-6660

Membership Directory

ACCOUNTANTS

David M. Green Bookkeeping & Tax Service
(717) 655-2560
20 East 6th Street
Waynesboro, PA 17268
David Green E.A. NTPI Fellow
dmgbookkeepingandtaxservice@gmail.com
dmgbookkeepingandtaxservice.com

Lawrence J. Hoffman, CPA P.C.
(877) 691-6850
P.O. Box 742
Blue Ridge Summit, PA 17214
Lawrence Hoffman
lhoffman@ljhcpa.com
ljhcpa.com

Musselman & Creager, LLP
(717) 762-0331
53 North Broad St
Waynesboro, PA 17268
Sidney Creager
sidcreager@earthlink.net
musselmanandcreager.com

Ocker Accountants & Consultants
(717) 762-3161
18 N. Oller Ave.
Waynesboro, PA 17268
Douglas Burkholder
doug@ockeraccounting.com
ockeraccounting.com

Potter, Lucinda D., CPA
(717) 762-7185
10 Walnut St.
Waynesboro, PA 17268
Lucinda Potter
ldpottercpa@comcast.net

SEK, CPAs & Advisors
(717) 263-3910
804 Wayne Ave.
Chambersburg, PA 17201
Brad Kearns
bkearns@sek.com
sek.com

Showalter & Miller, CPA's
(717) 762-8116
42 E. Main St.
Waynesboro, PA 17268
Linden Showalter
linden@showalterandmiller.com

The Palms Bookkeeping Services
(508) 325-2775
Gettysburg, PA 17325
Jill Yeagy
jill@thepalmsbookkeepingservices.com
thepalmsbookkeepingservices.com

ANTIQUES & ARTISANS

1884 Market House
(717) 377-8517
15 Scheirs Way
Waynesboro, PA 17268
Harry Morningstar
hgmorningstar@yahoo.com
1884markethouse.com

The Wildflower Marketplace
(240) 310-4264
11729 Anthony Highway
Waynesboro, PA 17268
Linda Gayman
info@shopwildflower.com
shopwildflower.com

ARCHITECTURAL DESIGN & BUILDING

Herbert, Rowland & Grubic, Inc
(717) 263-2070
207 Grant Street
Chambersburg, PA 17201
Bill Kick
ssitman@hrg-inc.com

Smith Company Design & Architecture
(717) 387-5603
239 B East Main Street
Waynesboro, PA 17268
Don Smith
don@smithcoarch.com
smithcoarch.com

ARTS, CERAMICS & POTTERY

Around the Rock
(717) 377-6793
48 South Potomac St.
Waynesboro, PA 17268
Emily Mottley
human@aroundtherock.org
aroundtherock.org

Arts Alliance of Greater Waynesboro/
Destination ARTS'
(717) 655-2500
50 West Main Street
Waynesboro, PA 17268
Arts Alliance Greater Waynesboro
contact@artsalliancegw.org
artsalliancegw.org

Ceramic Arts Center of Waynesboro, The
(717) 372-7906
13 S. Church St.
Waynesboro, PA 17268
Jenny Snyder
info@waynesboroceramics.org
waynesboroceramics.org

Cumberland Valley School of Music
(717) 261-1220
1015 Philadelphia Avenue
Chambersburg, PA 17201
Heather McEndree
hmcendree@cvsmusic.org
cvsmusic.org

Holmes Watercolors
(240) 315-8454
44 South Church St.
Waynesboro, PA 17268
Seth Holmes
info@holmeswatercolors.com
holmeswatercolors.com

ATTORNEYS

DSS Law
(717) 762-1160
13 W. Main St.
Waynesboro, PA 17268
Amy Stein
amy@dsslawyers.com
dsslawyers.com

Kulla, Barkdoll and Stewart, P.C.
(717) 762-3374
9 E. Main St.
Waynesboro, PA 17268
Stephen Kulla
contact@kullalaw.com
kullalaw.com

Law Office of Jeffrey S. Evans
(717) 762-1415
2021 E. Main St.
Waynesboro, PA 17268
Jeffrey Evans
jevanslaw@supernet.com
jevanslaw.net

Piatt Law PLLC
(717) 655-5487
20 East Sixth Street
Waynesboro, PA 17268
Jason Piatt
jpiatt@piattlaw.com
Piattlaw.com

R. Thomas Murphy & Associates, P.C.
(717) 762-1032
2005 E. Main St.
Waynesboro, PA 17268
Thomas Murphy
tomm@rthomasmurphy.com
rthomasmurphy.com

The Law Offices of Samantha K. Wolfe
(717) 655-2676
20 East Sixth Street, Suite 206
Waynesboro, PA 17268
Samantha Wolfe
wolfe@skwlawoffice.com
skwlawoffice.com

AUTOMOTIVE SALES-NEW & USED

Blaise Alexander Chevrolet
(717) 597-2131
1490 Ebberts Spring Court
Greencastle, PA 17225
Dominic Branch
blowe@blaisealexander.com
blaisechevy.com

Buchanan Auto Park
(717) 762-1107
11582 Buchanan Trail East
Waynesboro, PA 17268
Julie Mummert
julie@buchananisbetter.com
buchananautopark.com

Buchanan Automotive
(717) 762-3141
1035 E. Main St.
Waynesboro, PA 17268
Julie Mummert
julie@buchananisbetter.com
buchananautomotiveinc.com

Keystone Ford
(717) 264-5104
301 Walker Road
Chambersburg, PA 17201
Tamara Black
clayton@keystoneford.com
keystoneford.com

Roger's Auto Sales
(717) 762-2700
7408 Anthony Highway
Waynesboro, PA 17268
Roger Mong
rogersautosales@comcast.net

Wild West Motors
(717) 655-7260
905 West Main St
Waynesboro, PA 17268
Dan Long
wildwestmotors@comcast.net
wildwestmotors.com

AUTOMOTIVE SERVICES

American Custom Auto Care
(717) 387-0291
2025 Market Square Blvd, Suite A/B
Waynesboro, PA 17268
Codee Cook
americancustomautocare@gmail.com
americancustomautocare.com

Beavers Auto Body & Collision
(717) 762-8322
12691 Old Pen Mar Road
Waynesboro, PA 17268
Travis Beaver
beaversautobody@gmail.com

C K Auto and Truck LLC
(717) 765-4500
1622 East Main Street
Waynesboro, PA 17268
Dawn Koontz
Ckautoandtruck@yahoo.com

Dave Shockey Auto Body
(717) 762-7106
5662 Buchanan Trail East
Waynesboro, PA 17268
David Shockey
shockeyauto@hotmail.com

DD & Son, Inc.
(717) 765-8559
127 W. Main St.
Waynesboro, PA 17268
Jake Dick
dicksauto@pa.net
facebook.com/DAR6048

Denny's Garage
(717) 749-5546
8169 Anthony Highway
Quincy, PA 17247
Kathy Wishard
kwishard@hotmail.com
dennysgarage.com

Hammer Down Customs
(717) 655-2602
11879 Buchanan Trail East
Waynesboro, PA 17268
Dustin Slavens
dustin@hammerdowncustoms.com
hammerdowncustoms.com

Hess Auto Body & Large Truck Repairs
(717) 267-6091
5960 Altenwald Road
Waynesboro, PA 17268
Richard Hess

JM Automotive Repair, LLC
(717) 762-1456
11429 Buchanan Trail East
Waynesboro, PA 17268
Jason Mong
JM_autorepair@comcast.net

Newcomer's Auto & Truck Parts
(717) 762-1532
6405 Nunnery Rd.
Waynesboro, PA 17268
Annette Walstrum
newcomers@comcast.net
newcomerstruckparts.com

Shadetree Garage
(717) 655-5703
P.O. Box 337
Mont Alto, PA 17237
Rick Lee
rick@shadetreegarage.us
shadetreegarage.us

Tom Shockey Collision, Inc.
(717) 765-8000
5956 Buchanan Trail East
Waynesboro, PA 17268
Tom Shockey
tomshockeycollision@comcast.net
tomshockeycollision.com

BAKERY

Nanner Bananer Bakery
(717) 977-2927
11686 Brookdale Drive
Waynesboro, PA 17268
Kerri Ribarchik
nannerbananerbakeryllc@gmail.com
facebook.com/Nanner-Bananer-Bakery-
LLC-100493638755868

BANKS & CREDIT UNIONS

Corning Credit Union - CCU
1-800-677-8506 Ext 5130
800 Norland Ave
Chambersburg, PA 17201
Jamie Baker
Jamie.Baker@corningfcu.org
corningcu.org

F&M Trust
(717) 762-2188
200 E. Main St.
Waynesboro, PA 17268
Chastity Wantz
chastity.wantz@f-mtrust.com
fmtrust.bank

M & T Bank
(717) 765-3315
13 W. Main St.
Waynesboro, PA 17268
Greg White
gwhite@mtb.com
locations.mtb.com

Middletown Valley Bank
(717) 788-3250
11337 Buchanan Trail East
Waynesboro, PA 17268
Cody Hill
chill@mrvb.com
www.mrvb.com

Orrstown Bank
1-888-677-7869
77 E King St
Shippensburg, PA, 17257
James Marvin
jmarvin@orristown.com
www.orristown.com

Patriot Federal Credit Union
(717) 263-4444
P.O. Box 778
Chambersburg, PA 17201
John Kilduff
jkilduff@patriotfcu.org
patriotcu.org

BEER, WINE & SPIRITS

Beer Shed, The
(717) 762-3711
226 Walnut St.
Waynesboro, PA 17268
Andrew Caron
beershed@outlook.com
waynesborobeer.com

Blondie's
(717) 762-9030
11737 Old Rt 16
Waynesboro, PA 17268
Bob Backer
facebook.com/blondies

Michaux Brewing Company
(717) 765-7474
11657 Buchanan Trl E.
Waynesboro, PA 17268
Lauren Murray
michauxbrewingco@gmail.com
michauxbrewing.com

Rough Edges Brewing
(717) 655-7042
91 West Main St
Waynesboro, PA 17268
Casey Phebus
roughedgesbrewing@gmail.com
roughedgesbrewing.com

CABINETS & MILL WORK

Modern Casework Inc.
(717) 331-1543
206 Madison Ave.
Waynesboro, PA 17268
Jim Davis
jdavis@modern-casework-inc.com
modern-casework-inc.com

CAMPS & RETREATS

Camp Penn
(717) 762-2693
8005 Old Forge Road
Waynesboro, PA 17268
Melissa Galla
cpoffice@susumc.org
campenn.org

CAR WASH

Waynesboro Water Works, LLC
(717) 762-6677
324 W. Main St.
Waynesboro, PA 17268
Michael Cermak
Mike@WaynesboroWaterWorks.com
WaynesboroWaterWorks.com

CARPETS & INTERIORS

BKM Designs
717-552-051
Brenda Mowen
brenda@oldtowntouch.com

Elite Window Fashions
(717) 762-5627
2102 E. Main St.
Waynesboro, PA 17268
Penny Waters
elitewf@comcast.net
myelitewindowfashions.com

HomeRite Windows & Doors
(717) 749-4874
700 S. Potomac St
Waynesboro, PA 17268
Nick Cecco
nicholasrcecco@gmail.com
homeritewaynesboro.com

Lehmans Carpet
(717) 264-7070
2013 Lincoln Way East
Chambersburg, PA 17202
Bennett Selman
lehmanscarpet@hotmail.com
lehmanscarpet.com

Sherwin-Williams Company
(717) 762-3913
606 A E. Main St.
Waynesboro, PA 17268
Chance Minter
sw705931@sherwin.com
sherwin-williams.com

Waynesboro Flooring
(717) 788-4754
24 N Church Street
Waynesboro, PA 17268
Chuck Morningstar
sales.waynesborofloorcovering@gmail.com
waynesborofloor-covering.com

CATERING

Green Grove Gardens
(717) 597-0800
1032 Buchanan Trail East
Greencastle, PA 17225
Keith McCleaf
keith@greengrovegardens.com
greengrovegardens.com

CHILDCARE

First Start Partnerships
(717) 263-8019
254 E. King St.
Chambersburg, PA 17201
Annette Searfoss
asearfoss@firststartpartnerships.org
firststartpartnerships.org

Waynesboro Early Learning Center
(717) 762-9711
1801 E. Main St.
Waynesboro, PA 17268
Karen Walker
director@waynesboroelc.org

CHURCHES

Calvary Assembly of God, Inc.
(717) 762-5432
116 Snider Ave.
Waynesboro, PA 17268
Rev. Dwan Newsome
calvary.ag@comcast.net
discoverclvary.net

Christ United Methodist Church
(717) 762-7042
100 S. Church St.
Waynesboro, PA 17268
Brian Lucas
umchrist@gmail.com
umchrist.org

Evangelical Lutheran Church
(717) 762-9151
43 S. Church St.
Waynesboro, PA 17268
Andy Rovelstad
officemanager@elchome.org
elchome.org

Five Forks Brethren in Christ Church
(717) 762-2991
9244 Five Forks Rd.
Waynesboro, PA 17268
Julie Tiedemann
office@ffbic.org
ffbic.org

Grace Baptist Church
(717) 762-9323
623 North Grant Street Extended
Waynesboro, PA 17268
Scott Drinkwater
gbcwaynesboro@gmail.com
gbcwaynesboro.church

Hawley Memorial Presbyterian Church
(717) 794-2637
14753 Charmain Rd
Blue Ridge Summit, PA 17214
Carl Batzel
hawleychurch@gmail.com
hawleymemorial.com

LCBC Church
(717) 749-3451
13450 Midvale Road
Waynesboro, PA 17268
Tim Carver
lcbcchurch.com

Otterbein Church - Waynesboro
(717) 762-7147
912 South Potomac Street
Waynesboro, PA 17268
Michael Newman
info@otterbeinchurch.org
otterbeinchurch.org

Restoration Church of God in Christ
(717) 655-5783
66 West Main St.
Waynesboro, PA 17268
Tracey Blanks
tblankes@hotmail.com
restorationcogic.org

Rouzerville Christian Church
(717) 762-3776
11977 Old Route 16
Rouzerville, PA 17250
Robert Sanders
Pastor_laura@outlook.com
rouzervillechristianchurch.org

Salem Church of Waynesboro
(717) 762-8531
4881 Salem Church Road
Waynesboro, PA 17268
Brent Mangus
salemchurch@pa.net
salemchurchpa.org

St. Mary's Episcopal Church
(717) 762-1930
112 E. Second St.
Waynesboro, PA 17268
Linda Watkins
office@stmaryswayneboro.org
stmaryswayneboro.diocpa.org

The Presbyterian Church of Waynesboro
(717) 762-1842
105 East Main St.
Waynesboro, PA 17268
Caroline Vickery
pastor@waypres.com
waypres.com

Trinity United Church of Christ
(717) 762-7191
30 W. North St.
Waynesboro, PA 17268
Bruce Druckenmiller
tuccsecretary@gmail.com
tuccwboro.com

Waynesboro Seventh-Day Adventist Church
(717) 762-8777
1 State Hill Road
Waynesboro, PA 17268
Richard Easley
pgmclark@paconference.org
waynesboropa.adventistchurch.org

CLEANING

Empowered Cleaning LLC
(717) 860-2152
46 Edgewater Dr
Chambersburg, PA 17202
Nicole Stoner
nicole@empoweredcleaning.us
empoweredcleaning.us

Royal Flush Cleaning
(301) 462-9295
240 W. Main St.
Waynesboro, PA 17268
Sarah Carter
sarah@royalflushcleaning.com
royalflushcleaning.com

Tidy Bins
(717) 357-9160
884 Orrtanna road
Orrtanna, Pa 17353
James Ford
info@tidy-bins.com
htidy-bins.com

CLOTHING & SHOES

Barrel & Lace
(717) 552-5441
30 Walnut St
Waynesboro, PA 17268
Ginger Calimer
barrelandlace30@gmail.com

James Shoes
(717) 762-1945
76 West Main St.
Waynesboro, PA 17268
Diane Holdaway
Dholdaway42@gmail.com

COFFEE SHOPS

Brio Coffeehouse, Inc
(717) 889-0412
2 E Main St
Waynesboro, PA 17268
Rodney Cool
briocoffeehouse@gmail.com
briocoffeehouse.com

Dunkin Donuts / Ridhi Siddhi PA, Inc
(732) 822-1173
1900 East Main St
Waynesboro, PA 17268
Nick Patel
patel.nic@gmail.com
dunkindonuts.com

Lenca Coffee Roasters
(717) 660-9448
11973 Buchanan Trail East
Waynesboro, PA 17268
Emilio Garcia
lencacoffee@gmail.com
lencacoffeeroasters.com

Postmasters Coffee and Bakery
(240) 707-1373
11235 Buchanan Trail East
Waynesboro, PA 17268
Abigail Daniels
pmcoffeeandbakery@gmail.com

COMMUNITY ASSISTANCE

Waynesboro Community & Human Services
(717) 762-6941
123 Walnut St.
Waynesboro, PA 17268
Denise Esser
deniseesser@wchs-pa.org
wchs-pa.org

COMPUTER SERVICE & SALES

Cermak Technologies, Inc.
(717) 762-8234
46 S Potomac St
Waynesboro, PA 17268
Michael Cermak
contact@cermaktech.com
cermak.tech

JB Technical Solutions Inc.
(717) 316-0078
33 West Main St.
Waynesboro, PA 17268
Joshua Brown
joshbrown@jbtechnicalolutions.com
jbtechnicalolutions.com

CONSULTANTS

Holly Bertone | Wellness and Mindfulness
Coach, Consultant, and Speaker
(703) 835-5534
412 Channing Drive
Chambersburg, PA 17201
Holly Bertone
hjracer@gmail.com
pinkfortitude.mykajabi.com

ISO Advantage, LLC
(717) 339-8365
11003 Old Forge Rd.
Waynesboro, PA 17268
Judith Markel
isoadvantage@comcast.net
isoadvantages.com

CONTRACTORS

Brechbill & Helman Construction Company, Inc.
(717) 263-4621
1115 Sheller Avenue
Chambersburg, PA 17201
Barb Runyon
brunyon@bandhconst.com
brechbillandhelman.com

GRC General Contractor Inc.
(717) 762-1116
P.O. Box 216
Zullinger, PA 17272
James Rock
jim@grcgc.com
grcgc.com

Hammond's Painting
(717) 387-1542
412 Clayton Ave
Waynesboro, PA 17268
Kevin Hammond
okhammond@comcast.net

Hess Custom Builders
(717) 762-2902
11833 Country Club Road
Waynesboro, PA 17268
James Hess

Waynesboro Construction Company, Inc.
(717) 762-1151
P.O. Box 229
Waynesboro, PA 17268
Herb Sandifer
herb@waynesboroconstruction.com
waynesboroconstruction.com

COUNSELING

Pregnancy Ministries, Inc.
(717) 655-5603
245 South Potomac Street
Waynesboro, PA 17268
Sara Hollinshead
pmiwboro2@gmail.com
pregnancyministries.org

Spring of Hope Prayer Counseling
(717) 762-0234
230 S. Potomac St.
Waynesboro, PA 17268
Wayne Kuhns
office@springofhopepa.com
springofhope.org

DANCE

A&B Dance Dimensions
(717) 762-4456
44-A E. Main St.
Waynesboro, PA 17268
Barbara Hickman
abdancedimensions@yahoo.com
abdancedimensions.com

Bloom Dance Studio, LLC
(240) 500-6009
218 W. 5th Street
Waynesboro, PA 17268
Chelsea Shelton
bloombdancestudio@gmail.com
bloombdancestudio.com

DENTAL CARE

Covenant Family Dentistry
(717) 762-1515
750 S. Potomac St.
Waynesboro, PA 17268
Todd Wolff
info@covenantfamilydentistry.com
covenantfamilydentistry.com

DESIGN & PLANNING

Edge Fiber Solutions LLC
(410) 207-0875
5896 Buttermilk Rd
Waynesboro, PA 17268
Sarah Gardner
sgardner@edge-fs.com
edgefibersolutions.com

ECONOMIC DEVELOPMENT

Franklin County Area Development Corporation
(717) 263-8282
1900 Wayne Road
Chambersburg, PA 17202
Mike Ross
info@fcadc.com
fcadc.com

Greater Chambersburg Chamber of Commerce
(717) 264-7101
100 Lincoln Way East
Chambersburg, PA 17202
Steve Christian
chamber@chambersburg.org
chambersburg.org

Greater Waynesboro Chamber of Commerce
(717) 762-7123
118 Walnut St.
Waynesboro, PA 17268-1669
Jackie Mowen
director@waynesboro.org
waynesboro.org

Greencastle-Antrim Chamber of Commerce
(717) 597-4610
217 E Baltimore St
Greencastle, PA 17225
Debby Cunningham
Debby@greencastlepachamber.org
greencastlepachamber.org

Mainstreet Waynesboro, Inc.
(717) 762-0397
13 W. Main St.
Waynesboro, PA 17268
Bill Kohler
bill@waynesboro.org
mainstreetwaynesboro.org

Shippensburg Area Chamber of Commerce
(717) 532-5509
68 West King Street
Shippensburg, PA 17257
Scott Brown
chamber@shippensburg.org
shippensburg.org

Shippensburg Small Business Development
Center
(717) 477-1935
1871 Old Main Dr.
Shippensburg, PA 17257
Georgina Cranston
gtcranston@ship.edu
ship.edu/sbdc

Tuscarora Area Chamber of Commerce
(717) 328-5827
19 N. Main St.
Mercersburg, PA 17236
Renee Kelly
info@mercersburg.org
mercersburg.org

Waynesboro Industrial
Development Corporation
(717) 762-7123
118 Walnut St.
Waynesboro, PA 17268
Natasha Koons
director@waynesboro.org
waynesboroidc.org

ELECTRICIANS

Clearwater Electric
(727) 415-5322
10789 Ridge Crest Drive
Waynesboro, PA 17268
Matthew Slattery

Decker Electrical Services, Inc.
(717) 762-4111
2020C Market Square Blvd
Waynesboro, PA 17268
Gary Decker
gdecker3822@comcast.net

G. W. Electric Company, Inc.
(717) 597-7137
1524 Buchanan Trail East
Greencastle, PA 17225
Robert Wolff
gwelectric@pa.net
gwelectricpa.com

Jake's Electric, LLC
(717) 977-6382
5978 Marsh Rd.
Waynesboro, PA 17268
James Myers
jmyers5978@gmail.com

Keystone Valley Electric, Inc.
(717) 762-8592
P.O. Box 805
Waynesboro, PA 17268
Steven Lanehart
lindakve@comcast.net

EMERGENCY SERVICES

Blue Ridge Fire & Rescue
(717) 794-2323
13063 Monterey Lane
Blue Ridge Summit, PA 17214
Eric Patterson
fferic09@gmail.com
brfire@comcast.net

Waynesboro Volunteer Fire Department, Inc.
(717) 762-2611
10 Virginia Avenue
Waynesboro, PA 17268
Lori Depies
ldepies64@gmail.com
wv2fd.com

ENGINEERS

Waynesboro Design Services, Inc.
(717) 765-4569
11662 Orchard Rd
Waynesboro, PA 17268
Kevin Mouer
sales@waynesborodesign.com
waynesborodesign.com

ENTERTAINMENT

Capitol Theatre Center
717-263-0202
159 S. Main Street
Chambersburg, PA 17201
Kelly Kozlowski
kkozlowski@thecapitoltheatre.org
thecapitoltheatre.org

Funcastle Fun Center
(717) 593-9621
3054 Buchanan Trail East
Greencastle, PA 17225
Matt Bible
funcastlefuncenter@gmail.com
funcastleusa.com

Pockets Gaming and Billiard Lounge
(717) 655-2049
118 Walnut St
Waynesboro, PA 17268
Scott Emory
pocketsgaminglounge@gmail.com

Strouse Entertainment
(717) 448-1770
15 Bridgewater Road
Newville, PA 17241
Dillon Strouse
info@strouseentertainment.com
strouseentertainment.com

Warehouse Cinemas
(240) 608-4900
20145 Leitersburg Pike
Hagerstown, MD 21742
Arianna Taylor
arianna@warehousecinemas.com
warehousecinemas.com/leitersburg

Waynesboro Community Concert Association
(717) 609-6853
P.O. Box 785
Waynesboro, PA 17268
Cherry Snyder
info@waynesboropaconcerts.org
waynesboropaconcerts.org

Waynesboro Theatre
(717) 387-5335
75 West Main St
Waynesboro, PA 17268
Joseph Freeman
waynesborotheatreonmain@gmail.com
waynesborotheatre.org

ENVIRONMENT & CULTURAL EDUCATION

The Institute
(717) 762-0373
239B East Main Street
Waynesboro, PA 17268
Tracy Holliday
info@natureandcultureinstitute.org
natureandcultureinstitute.org

EVENT PLANNING

Tri State Event Planning Services
(717) 262-8839
136 Harvest Wagon Way
Greencastle, PA 17225
cindyb@tristateevents.org
tristateevents.org

EXCAVATING, PAVING & SEALCOATING

AAA Paving & Excavating, Inc.
(717) 762-4940
8166 Mentzer Gap Road
Waynesboro, PA 17268
Lisa Moats
aaa@aaapavinginc.com
AAAPavingInc.com

Country Sealcoating's & Paving
(717) 762-0600
800 West King Street
Waynesboro, PA 17268
Andrew Koons
andrew@countrysealcoatings.com
countrysealcoatings.com

Ganoe Paving Inc
(717) 597-2567
1455 Buchanan Trail West
Greencastle, PA 17225
Dirk Mowen
ganoepavinginc@comcast.net
ganoepavinginc.com

FARMS/RETAIL

Ivy Hill Farm
(240) 527-9268
13840 Smithsburg Pike
Smithsburg, MD 21783
Karen Martin
martinivy@aol.com
ivyhillfarm.com

Sugar Hollow Farm Alpacas, LLC
(717) 749-7056
9955 Masters Road
Waynesboro, PA 17268
Kathryn Brown
info@shfalpacas.com
www.shfalpacas.com

FENCING (SPECIALTY)

Trident Enterprises International Inc.
(717) 762-5912
144 Cleveland Ave.
Waynesboro, PA 17268
Linda Sheehan
linda@tridentcorp.com
tridentcorp.com

FINANCIAL & INVESTMENT SERVICES

Edward Jones - Bob Correll
(717) 765-0166
626 North Grant St
Waynesboro, PA 17268
Bob Correll
robert.correll@edwardjones.com
edwardjones.com

Edward Jones - Douglas W. Smith
(717) 762-0911
20 E. Sixth St.
Waynesboro, PA 17268
Douglas Smith
douglas.smith@edwardjones.com
edwardjones.com/douglas-smith

Edward Jones - Frank Pinto
(717) 655-2244
38 E Main Street
Waynesboro, PA 17268
Frank Pinto
frank.pinto@edwardjones.com
edwardjones.com

Edward Jones- Marissa Correll
(717) 655-2244
38 Main St
Waynesboro, PA 17268
Marissa Correll
marissa.pintoburt@edwardjones.com
edwardjones.com

JZ Financial Management
(717) 660-0709
Virtual Services
Jerry Zeigler
jerryzeigler@jzfinancialmanagement.com
jzfinancialmanagement.com

Primerica Financial Services
(717) 749-5421
1930 Scotland Ave
Chambersburg, PA 17201
Bob Allison
robertharryallison@primerica.com
primerica.com/public

Prudential Advisors
(223) 386-6521
20140 Scholar Dr
Hagerstown, MD 21742
Cortnie Beaver
cortnie.beaver@prudential.com
prudential.com

Sterling Financial Management, Inc.
(301) 733-7777
1825 Howell Rd
Hagerstown, MD 21740
David Neterer
david.neterer@sterlingfm.com
sterlingfm.com

FIRE & WATER DAMAGE RESTORATION

Rainbow Restoration of Waynesboro
(717) 788-3030
4758 Zane A Miller Drive
Waynesboro, PA 17268
Brian Bitner
waynesboro.sales@rainbowintl.com
rainbowrestores.com/waynesboro

FITNESS

East Coast Training Asylum
(717) 404-4779
130 West Third Street
Waynesboro, PA 17268
Clinton Lantz
ecta5150gym@gmail.com
ectagym.com

Fort Ritchie Community Center
(301) 241-5085
14421 Lake Royer Drive
Cascade, MD 21719
Samantha Phillips
bbrowning@thefrcc.org
thefrcc.org

Rainbow Gymnastics
(717) 762-0448
71 West Main Street
Waynesboro, PA 17268
Leslie Vickery
vickeryleslie@yahoo.com
rainbowgymasticspa.com

Waynesboro Area YMCA
(717) 762-6012
810 E.Main St.
Waynesboro, PA 17268
Amanda Gietka
amanda@waynesboroymca.org
waynesboroymca.org

WBO Health & Fitness
(717) 655-5024
118 Walnut St.
Waynesboro, PA 17268
Dylan Bryan
dbryan@wbofit.com
wbofit.com

FLORISTS

Eichholz Flowers
(717) 762-7131
133 E. Main St.
Waynesboro, PA 17268
Jonathan Ingels
info@eichholzflowers.com
eichholzflowers.com

FRAMING

Megan's Custom Framing
717-655-5206
114 Walnut St. Suite 2
Megan Knarr
megan@megancustomframing.com
megancustomframing.com

FUNERAL & CREMATION SERVICES

Green Hill Cemetery Association
(717) 762-2759
953 South Potomac St.
Waynesboro, PA 17268
Marshall Rock
greenhillcemetery@centurylink.net

Grove-Bowersox Funeral Home, Inc.
(717) 762-2811
50 S. Broad St.
Waynesboro, PA 17268
Jeremy Bowersox
info@bowersoxfuneralhomes.com
bowersoxfuneralhomes.com

GOLF COURSES & GOLF SERVICES

Waynesboro Country Club
(717) 762-8401
11000 Country Club Road
Waynesboro, PA 17268
Steven Golssinger
ronda@waynesborocc.com
Waynesborocc.com

GOVERNMENT & ELECTED OFFICIALS

Borough of Waynesboro
(717) 762-2101
P.O. Box 310
Waynesboro, PA 17268
Jason Stains
jason@waynesboropa.org
waynesboropa.org

Congressman Dr. John Joyce
(717) 753-6344
100 Lincoln Way East
Chambersburg, PA 17201
Nancy Bull
nancy.bull@mail.house.gov
johnjoyce.house.gov

Franklin County Commissioners
(717) 264-4125
272 N. Second St.
Chambersburg, PA 17201
Dean Horst
commissioners@franklincountypa.gov
franklincountypa.gov

Mont Alto Borough
(717) 749-5808
3 North Main St
Mont Alto, PA 17237
Patti Stitley
mab@comcast.net
montaltoborough.com

Representative Paul Schemel
(717) 749-7384
1402 East Main Street
Waynesboro, PA 17268
Ashlyn Shockey
ashockey@pahousegop.com
RepSchemel.com

Senator Doug Mastriano
(717) 264-6100
37 South Main Street, Suite 200
Chambersburg, PA 17201
Lisa Helm
lhelm@pasen.gov
senatormastriano.com

Quincy Township Supervisors
(717) 762-5679
7575 Mentzer Gap Road
Waynesboro, PA 17268
Cathy Kozain
info@quincytwp.org
quincytwp.org

Washington Township Supervisors
(717) 762-3128
13013 Welty Road
Waynesboro, PA 17268
Jeff Geesaman
jbg@washtwp-franklin.org
washtwp-franklin.org

GRAPHIC DESIGN

Essential Marketing Concepts
(717) 552-2968
375 Floral Ave, Suite 102B
Chambersburg, PA 17201
Cheyanne Morris
cheyanne@essentialmc.net
essentialmc360.com

HEALTH CARE CENTERS & HOSPITALS

Elevation Healthcare
(717) 655-2509
1647 East Main Street
Waynesboro, PA 17268
Courtney Bohn
Info@elevationwell.com
elevationwell.com

Franklin Hospice
(717) 504-3465
209 Grant Street
Chambersburg, PA 17201
Karen Giffin
Kmgiffin@hospiceofwc.org
Franklinhospice.org

Keystone Health
(717) 709-7900
111 Chambers Hill Drive
Chambersburg, PA 17201
Jan Lewis
email@keystonehealth.org
keystonehealth.org

Leg Up Farm Franklin County
(717) 352-3046
3720 Clubhouse Drive
Fayetteville, PA 17222
Patti Nitterhouse
patti@pennhomes.com
legupfarm.org/franklincounty

Mercy House of Chambersburg
(717) 575-5035
730 Norland Ave.
Chambersburg, PA 17201
Ashley Winters
awinters@mercyhouseofchambersburg.org
mercyhouseofchambersburg.org

Meritus Health
(301) 790-8000
11116 Medical Campus Rd.
Hagerstown, MD 21742
Jeannie Constable
media@meritushealth.com
MeritusHealth.com

Pediatric Specialists of Franklin County, P.C.
(717) 765-6621
27 Vista Drive
Waynesboro, PA 17268
Fouzia Rishi
waynesboropediatrician.com

WellSpan Waynesboro Hospital
(717) 765-4000
501 E. Main St.
Waynesboro, PA 17268
Erin Raub
eraub@wellspan.org
wellspan.org

HEATING & AIR CONDITIONING

McLaughlin's Energy Services
(717) 762-5711
11931 Buchanan Trail East
Waynesboro, PA 17268
Mark McLaughlin
mark@mclheat.com
mclheat.com

Tevis Energy
(717) 762-3811
www.tevisenergy.com
Abby Finch
info@tevisenergy.com
tevisenergy.com

Thompson Oil Company, Inc.
(717) 762-3011
329 West North Street
Waynesboro, PA 17268
Kaitlyn Cashmere
support@thompsonoilco.com
thompsonoilco.com

HOLISTIC HEALTH

The Center of Balance, LLC
(717) 643-1404
29 N. Jefferson Street
Greencastle, PA 17225
Louise Kemper
centerofbalancellc@gmail.com
thecenterofbalancellc.com

HOTELS, MOTELS, & BED AND BREAKFASTS

Cobblestone Hotel & Suites
(717) 765-0034
12695 Washington Township Blvd.
Waynesboro, PA 17268
Janet Kuhn
gm.pa0034@staycobblestone.com
staycobblestone.com

The Amberson House
(717) 762-8112
128 West Main Street
Waynesboro, PA 17268
Emily Bizzarri
ejbizzarri@earthlink.net
theambersonhouse.com

ICE CREAM

Antietam Dairy
(717) 762-6212
834 S. Church St.
Waynesboro, PA 17268
Cody Gregory
waynesboroantietamdairy@yahoo.com

Dairy Queen
(717) 762-8944
1951 E. Main St.
Waynesboro, PA 17268
Ann Ashburn
ashburn0078@gmail.com
dairyqueen.com

INDEPENDENT, ASSISTED LIVING & HOME CARE

Hearthstone Retirement Home & In-Home Care Services
(717) 762-6313
102 S. Potomac St.
Waynesboro, PA 17268
Joey Thomas
jthomas01@embarqmail.com
hearthstoneretirementhome.org

Leland of Laurel Run, The
(717) 749-0083
120 W. Main St.
Waynesboro, PA 17268
Teresa Straley
tstraley@lelandpersonalcare.com
lelandpersonalcare.com

Oasis Senior Advisors
(240) 866-0064
32 Ashley Way
Myersville, MD 21773
Cathy Baker
OSATeam@YourOasisAdvisor.com
oasisseioradvisors.com/frederick

Quincy Village
(717) 749-2300
6596 Orphanage Road
Waynesboro, PA 17268
Julie Nelson
jnelson@psl.org
quincyvillage.org

Visiting Angels
(717) 749-0458
10764 Buchanan Trail East
Waynesboro, PA 17268
Brian Bailie
office.waynesboro@visitingangels.com
visitingangels.com

INDIVIDUALS

Beck, Stephen E.
(717) 762-9423
12199 Gehr Road
Waynesboro, PA 17268
beck.se@comcast.net

Dick, Phyllis Alta
(717) 794-5120
13317 North Ave.
Blue Ridge Summit, PA 17214
sweeping731@gmail.com

Sue James, Author
(717) 809-1135
141 Briar Ridge Drive
Waynesboro, PA 17268
Sue James
suejames1114@gmail.com

INSURANCE

AFS Insurance & Financial Service
(717) 762-5780
11001 Anthony Hwy
Waynesboro, PA 17268
Jen Moore
email@afsmainstreet.com
afsagent.com

Antrim Insurance Agency, Inc.
(717) 762-4565
1685 E. Main St.
Waynesboro, PA 17268
David Rajtik
david@antriminsurancepa.com
antriminsurancepa.com

Bell Insurance, Inc.
(717) 597-1151
110 E. Franklin St.
Greencastle, PA 17225
Carrie Heckman
checkman@bellinsuranceinc.com
bellinsuranceinc.com

Blue Ridge Risk Partners
(717) 762-3147
239 E. Main St
Waynesboro, PA 17268
Greg Duffey
Greg.duffey@blueridgeriskpartners.com
blueridgeriskpartners.com

Erin Shank Insurance Agency/State Farm
(717) 762-7101
76 East Main St.
Waynesboro, PA 17268
Erin Shank
Erin@erinshankinsurance.com
Erinshankinsurance.com

Penn National Insurance
(800) 388-4764
2 N. Second St.
Harrisburg, PA 17105
pennnationalinsurance.com/portal

State Farm Insurance - Chad Slimmer
(717) 762-0650
11875 N. Landis Ave.
Waynesboro, PA 17268
Chad Slimmer
chad@chadslimmer.com
chadslimmer.com

Strickler Agency
(717) 263-4179
1200 McKinley St
Chambersburg, PA 17202
Roxi Seilhamer
rseilhamer@stricklerins.com
stricklerins.com

Tammy Meyers, Independent Insurance Agent
(717) 557-5831
1550 Table Rock Rd.
Gettysburg, PA 17325
Tammy Meyers
tammy_meyers@us.aflac.com
aflac.com/agents/tammy_meyers

LANDSCAPING

B&D Lawn & Landscape, Inc.
(717) 765-4551
9077 Goods Dam Road
Waynesboro, PA 17268
Brian Stum
brian@banddlawnandlandscape.com
banddlawnandlandscape.com

B&H Lawn and Floral Inc.
(717) 762-2439
7620 Anthony Highway
Waynesboro, PA 17268
Jim Bakner
bhlawnservices@yahoo.com
bandhincfloral.com

Green Arbor Landscape, LLC
(717) 762-9344
11401 Buchanan Trail East
Waynesboro, PA 17268
John Beck
johnryan@thegreenarbor.com
thegreenarbor.com

S. Stine & Son Lawn & Garden
(717) 729-5348
10837 Wharf Road
Waynesboro, PA 17268

Tru-Precision Lawn Care, Inc.
(717) 762-7053
201 W 3rd St
Waynesboro, PA 17268
Darrell Swart
darrellswart@tru-precisionlawncare.com
tru-precisionlawncare.com

LIBRARY

Alexander Hamilton Memorial Free Library
(717) 762-3335
45 E. Main St.
Waynesboro, PA 17268
Gina Vitale
director@ahmfl.org
ahmfl.org

Biblical Education Center Library
(717) 597-0057
PO Box 77
Shady Grove, PA 17256
Sharon Smith
office@becbooks.org
biblicaleducationcenter.org

Blue Ridge Summit Free Library
(717) 794-2240
13767 Monterey Lane
Blue Ridge Summit, PA 17214
Paul Pinkerton
brsmtboard@gmail.com
fclspa.org/locations/blue-ridge-summit-library

MANUFACTURING & PRODUCTION

APX Null Machine Shop
(717) 597-3330
95 Commerce Ave
Greencastle, PA 17225
Joel Bradnick
jbradnick@apx-coatings.com
APXNullMachineShop.com

Beck Manufacturing
(717) 762-9141
330 East Ninth St
Waynesboro, PA 17268
Chris Hohl
info@beckmfg.com
beckmfg.com

DanFoss/AAIM Controls
(717) 765-9100
11885 Mutual Dr
Waynesboro, PA 17268
Brian Davis
briandavis@danfoss.com
danfoss.com

Fil-Tec Inc.
(301) 824-6166
P.O. Box B
Hagerstown, MD 21720
Vincent (Ted) Schoeck
tschoeck@fil-tec.com
fil-tec.com

Guardian Booth
(844) 992-6684
13338 Midvale Road
Waynesboro, PA 17268
info@guardianbooth.com
guardianbooth.com

Jamison-B.M.P., LLC
(240) 313-7914
55 J.V. Jamison Drive
Hagerstown, MD 21740
John Williams
jtw@jamisondoor.com
jamisondoor.com

Johnson Controls
(717) 762-2121
100 C.V. Ave.
Waynesboro, PA 17268
johnsoncontrols.com

Lightning Industrial Tool Grinding
(717) 762-5211
P.O. Box 822
Cascade, MD 21719
Terry LeFevre

Manitowoc Crane-Group - Grove Worldwide
(717) 597-8121
1565 Buchanan Trail E.
Shady Grove, PA 17256
Sheena Showe
Sheena.showe@manitowoc.com
manitowoccranes.com/en

Manufacturers' Association
(717) 843-3891
3405 Board Road, Ste 100
York, PA 17406
Karla Wolf
kwolf@mascpa.org
mascpa.org

ProTube, Inc.
(717) 765-9400
4872 Zane A. Miller Drive
Zullinger, PA 17272
Jared Thomas
jthomas@protube.net
protube.net

WIKA Mobile Control
(717) 217-2200
1540 Orchard Drive
Chambersburg, PA 17201
Sarah Nell
sarah.nell@wika.com
wika-mc.comte.com

MARKETING & ADVERTISING

2085 Productions
(717) 387-2118
9471 Heshshire Court
Waynesboro, PA 17268
Andrew Gehman
andrew@year2085productions.com
year2085productions.com

Essential Marketing Concepts
(717) 552-2968
375 Floral Ave, Suite 102B
Chambersburg, PA 17201
Cheyanne Morris
cheyanne@essentialmc.net
essentialmc360.com

MASONRY

L.T. Rush Stone and Fireplace
(717) 765-6941
4493 Buchanan Trail East
Waynesboro, PA 17268
Troy Yingling
troy@ltrush.com
ltrushstone.com

Nolan Masonry LLC
(717) 552-4874
PO Box 111
Mont Alto, PA 17237
Leanne Nolan
Nolanmasonry@comcast.net
nolanmasonry.com

MASSAGE THERAPY

Peace and Serenity Spa
(717) 372-1556
230 S Potomac St.
Waynesboro, PA 17268
Becky Hess
beckyhess@peaceserenityspa.com
peaceserenityspa.com

MINING & QUARRIES

New Enterprise Stone & Lime
(717) 267-2244
297 Quarry Road
Chambersburg, PA 17202
Jim Zimmerman
JCZimmerman@nesl.com
nesl.com

Specialty Granules LLC
(717) 794-2184
1455 Old Waynesboro Rd
Blue Ridge Summit, PA 17214
Kevin Kelly
kevin.kelly@specialtygranules.com
specialtygranules.com

MOTORSPORTS

Stoneham's Motorsports, Inc.
(717) 762-7420
5890 Buchanan Trail East
Waynesboro, PA 17268
Lisa Stoneham
mail@stonehams.com
stonehamsonline.com

MOVING & STORAGE

Quincy & Waynecastle Storage
(717) 749-5944
7485 Anthony Highway
Waynesboro, PA 17268
Nancy Pentz
storage@qwmastorage.com
qwmastorage.com

Red Roof Storage
(717) 765-0071
320 S. Potomac St.
Waynesboro, PA 17268
Connie Zimmerman
redroofstorage@embarqmail.com

WDStorage
(717) 762-1755
11662 Orchard Rd.
Waynesboro, PA 17268
Kevin Mouer
storage@waynesborodesign.com
www.storage.waynesborodesign.com

Zody's Moving & Storage, Inc.
(717) 762-4815
11737 Wharf Road
Waynesboro, PA 17268
Lauren Andree
laurenzodymoving@gmail.com
zodymoving.com

MUSEUMS, PARKS & HISTORY

Friends of the Monterey Pass Battlefield, Inc
(717) 762-5619
14325 Buchanan Trail East
Waynesboro, PA 17268
Lee Royer
montereypassbattlefield@gmail.com
montereypassbattlefield.org

Renfrew Museum and Park
(717) 762-4723
1010 E. Main St.
Waynesboro, PA 17268
Becky LaBarre
info@renfrewmuseum.org
renfrewmuseum.org

NON-PROFITS

BLAST
(240) 344-5093
14959 Buchanan Trail East
Waynesboro, PA 17268
Stacie Massette
smassett@wellspan.org
blastofwaynesboro.com

Breast Cancer Awareness Cumberland Valley
(301) 791-5843
12916 Conamar Drive
Hagerstown, MD 21742
Stacy Horst
stacy@bcacv.org
bcacv.org

Connection, Inc. The
(717) 387-2403
112 Walnut St.
Waynesboro, PA 17268
Mandy Hood
connectingwomenwithgod@gmail.com
connectingwomenwithgod.com

Franklin County Community Foundation
(717) 236-5040
P.O. Box 678
Harrisburg, PA 17108
Janice Black
janice@tfec.org
tfec.org

Habitat for Humanity of Franklin County
(717) 267-1899
1502 Lincoln Way E
Chambersburg, PA 17202
Mark Story
mark@habitatfranklinpa.org
habitatfranklinpa.org

Horizon Goodwill Industries
(301) 733-7330
14515 Pennsylvania Ave
Hagerstown, MD 21742
Craig Foster
marketing@goodwill-hgi.org
horizongoodwilli.org

LIU12 Franklin County Literacy Council
(717) 504-4459
101 E. King Street
Chambersburg, PA 17201
Angie Wilt
liufc@liu12.org
liu12.org/fcfc

Operation Second Chance
(301) 972-1080
20251 Century Blvd
Germantown, MD 20874
Cindy McGrew
Cindy@operationsecondchance.org
operationsecondchance.org

Rotary Club of Waynesboro
P.O. Box 523
Waynesboro, PA 17268
Brian Shook
rotaryclubofwaynesboro.org

The Lunch Place
(717) 372-4527
100 South Church Street
Waynesboro, PA 17268
Denise Esser
info@thelunchplace.org

United Way of Franklin County
(717) 262-0015
182 S. Second Street
Chambersburg, PA 17201
Amy Hicks
ahicks@uwfcpa.org
uwfcpa.org

WALL (Waynesboro Lioness Lions)
(717) 794-5120
PO Box 797
Waynesboro, PA 17268
Phyllis Dick
sweeping731@gmail.com

Waynesboro Beneficial Fund
(717) 762-7123
118 Walnut St.
Waynesboro, PA 17268
John Blubaugh
director@waynesboro.org
waynesborogives.com

Waynesboro Lions Club
(717) 762-7570
PO Box 786
Waynesboro, PA 17268
Sandy Eisenhard
mike@tomfam.com
e-clubhouse.org/sites/waynesborolionsclubpa

Waynesboro Summer Jubilee, Inc.
(717) 762-7123
118 Walnut St.
Waynesboro, PA 17268
Hollie Miller
hamiller@patriotfcpa.org
summerjubilee.org

Women of Valor Ministries, Inc. d/b/a ValorExcel
(240) 329-9387
324 E. Antietam Street
Hagerstown, MD 21740
Lori Wriston
info@valorexcel.com
valorexcel.com

OFFICE EQUIPMENT & SUPPLIES

Dice Office Equipment
(717) 597-0300
20 Commerce Ave.
Greencastle, PA 17225
Kevin Swope
kevin@diceoe.com
diceoe.com

OPTICAL SERVICES

Antietam Eye Associates, Inc.
(717) 387-5657
1051 E. Main St.
Waynesboro, PA 17268
Jerzy Kornilow
eyecare@antietameye.com
antietameye.com

PAYROLL

BCM Payroll Services, Inc.
(717) 264-7374
405 Lincoln Way East
Waynesboro, PA 17268
Marissa Schmehl
marissa@bcmpayroll.com
bcmpayroll.com

PEST CONTROL

Real Kill Termite & Pest Control, LLC
(717) 762-8448
33 E. Main St.
Waynesboro, PA 17268
Ryan Summers
realkilltermite@gmail.com
realkillpestcontrol.com

PET SERVICES & SUPPLIES

Antietam Humane Society, Inc.
(717) 762-9091
8513 Lyons Road
Waynesboro, PA 17268
Kacie Morrell
ahsinc@pa.net
antietamhumanesociety.org

Marsh Run Kennels
(717) 331-8762
4191 Sheely Rd.
Waynesboro, PA 17268
Bart Stevens
marshrunkennels@comcast.net
marshrunkennels.com

Yappy Days Pet Grooming
(240) 527-4475
204 S. Potomac St.
Waynesboro, PA 17268
Deana Beasley
deana.jo@hotmail.com
facebook.com/groomingbydeanajo

PHARMACY

Antietam Pharmacy
(717) 762-1164
730 S. Potomac St.
Waynesboro, PA 17268
David Riley
antietampharmacy@hotmail.com
antietampharmacy.com

Norland Avenue Pharmacy LLC
(717) 217-6790
12 St. Paul Drive
Chambersburg, PA 17201
Kimberly Dockman
inquiry@norlandrx.com
norlandrx.com

Savage Family Pharmacy
(717) 762-2915
604 E. Main St.
Waynesboro, PA 17268
Rodger Savage
info@savagerx.com
savagerx.com

PHOTOGRAPHERS

Moonlight and Lace Boudoir
(240) 347-3343
47 W. Main St.
Waynesboro, PA 17268
Deanna Kelbaugh
hello@moonlightandlaceboudoir.com
moonlightandlaceboudoir.com

Pictures Plus
(717) 765-9223
5256 Buchanan Trail East
Waynesboro, PA 17268
Julie Monn
randy@picplus.com
picplus.com

PHYSICAL THERAPY

Drayer Physical Therapy Institute
(717) 387-8052
648 East Main Street
Waynesboro, PA 17268
Dennis Mahaffey
DMahaffey@DrayerPT.com
DrayerPT.com

Waynesboro Physical Therapy
and Sports Medicine
(717) 655-5681
118 Walnut St.
Waynesboro, PA 17268
Derek Kling
derekkl@waynesboroapt.com
waynesboroapt.com

PLUMBING

Bilder & Sons Plumbing
(301) 471-8621
12365 Clermont Avenue
Blue Ridge Summit, PA 17214
Kevin Bilder
bilderandsons@yahoo.com
fixyourpotty.com

Martz Plumbing, Heating & A/C, Inc.
(717) 762-6115
216 W. Fifth St.
Waynesboro, PA 17268
Jason Collier
office@martzplumbing.com
martzplumbing.com

POWDER COATING

Biltwood Powder Coating
(717) 593-9400
217 N. Franklin St
Waynesboro, PA 17268
Jim McCleaf
info@biltwoodcoatings.com
biltwoodcoatings.com

PRESS, PUBLICATIONS & RADIO

Local.News LLC
(717) 404-8726
Dan Dedona
contact@localnews1.org
localnews1.org

NEWS TALK 1037FM/Magnum Broadcasting
(877) 709-1037
37 S. Main St.
Chambersburg, PA 17201
Patrick Ryan
patr@fmtalk1037.com
newstalk1037fm.com

Verstandig Media
(717) 597-9200
10960 John Wayne Dr
Greencastle, PA 17225
Blake Truman
btruman@verstandig.com
verstandig.com

PRINTING & SUPPLIES

Graphics Universal Inc
(717) 597-3108
25 Commerce Ave
Greencastle, PA 17225
Garon Gembe
garon@graphicsuniversal.com
graphicsuniversal.com

J & M Printing
(717) 762-8204
114 Walnut St.
Waynesboro, PA 17268
Karen Beaver
jm@mercercsburg.net
mercercsburg.net

PROPERTY LEASING
& MANAGEMENT

Antietam Realty, Inc.
(717) 765-8011
10796 Buchanan Trail East
Waynesboro, PA 17268
Jennifer Martin
jmartin@antietamrealtyinc.com
antietamrealtyinc.com

Avalon Townhomes
(717) 749-7500
4614 A2 Zana Court
Waynesboro, PA 17268
Beth Graves
bgraves@washcomanagement.net
washcomanagement.net

J.C. BAR Properties, Inc.
(717) 761-7801
224 Saint Charles Way
York, PA 17402
Robert Gothier
info@jcbprop.com
jcbprop.com

Luminest, Inc.
(717) 977-3900
82 W Queen St
Chambersburg, PA 17201
David Keller
dkeller@luminest.org
luminest.org

Meadow Breeze LLC
(717) 765-6996
626 North Grant St.
Waynesboro, PA 17268
Craig McCleaf
meadowbreezellc@gmail.com

Potomac Leasing LLC
(717) 387-1946
PO Box 824, Waynesboro, PA 17268
Todd Wolff
potomacleasingllc@gmail.com

Touhey Rentals
(240) 527-9689
18305 Summerlin Drive
Hagerstown, MD 21740
Angie Touhey
oliviaogden@aol.com

WACCO Properties, Inc.
(717) 765-0465
38 West Main St
Waynesboro, PA 17268
Elizabeth Carey
waccoproperties@gmail.com

REAL ESTATE SERVICES

Alan Fishman Coldwell Banker Realty
(301) 518-8390
1814 E Main St
Waynesboro, PA 17268
Alan Fishman
alan.fishman@cbrealty.com
FishmanFindsHomes.com

Buchanan Settlement Services, Ltd., Inc.
(717) 762-1415
2021 East Main Street
Waynesboro, PA 17268
Nathan Bonner
nathan@buchanansettlements.com
buchanansettlements.com

Gundacker Group, Kimberley Gundacker
(717) 387-3080
11949 Robinwood Dr S
Hagerstown, MD 21742
Kimberley Gundacker
kimberley@gundackergroup.com
gundackergroup.com

Hurley Auctions
(717) 597-9100
2800 Buchanan Trail East
Greencastle, PA 17225
Denise Myers
info@hurleyauctions.com
hurleyauctions.com

Iron Valley Real Estate of Waynesboro
(717) 723-3351
200 North Franklin Street
Waynesboro, PA 17268
Josh Mummert
admin@IVREwaynesboro.com
irvewaynesboro.com

Kandor Real Estate
410 N. Grant St. Suite A
Waynesboro, PA 17268
(717) 762-8100
Kristyn Martin
Pahomes717@gmail.com
KandorRE.com

Matt Gunder Coldwell Banker Realty
(717) 765-2566
1814 East Main Street
Waynesboro, PA 17268
Matt Gunder
matt.gunder@cbhomes.com
cbhomes.com

Mountain Valley Real Estate
(717) 762-9329
64 E. Main St.
Waynesboro, PA 17268
Carol Young
mntnval@supernet.com

Paul Gunder Coldwell Banker Realty
(717) 729-0200
1814 E. Main St.
Waynesboro, PA 17268
Paul Gunder
paul.gunder@cbhomes.com
listwithpaul.com

RE/MAX Results - Arlene Unger Real Estate Team
(240) 707-3200
11235 Buchanan Trail East
Waynesboro, PA 17268
Arlene Unger
arleneungersells@gmail.com
arleneungersells.com

Ryan Fetterhoff - ReMax Elite Services
(717) 729-1734
1580 Buchanan Trail East
Greencastle, PA 17225
Ryan Fetterhoff
ryanfetterhoff@remax.net

Ronnie Martin Realty
(717) 765-6511
1400 East Main St.
Waynesboro, PA 17268
Ron Benedict
ron@ronniemartin.com
ronniemartinrealty.com

RECYCLING

American Recycling Service, Inc.
(717) 749-5751
6200 Mount Zion Road
Waynesboro, PA 17268
Dave Cauffman
amrecycleservice@aol.com
americanrecycling.com

RESTAURANTS

Cafe Del Sol
(717) 762-1477
11119 Buchanan Trail East
Waynesboro, PA 17268
Bill Socks
billsox@centurylink.net
delsolcafes.com

Delamor Enterprisers/McDonald's
(717) 263-5641
1520 Lincoln Way East
Chambersburg, PA 17202
Crystal Musselman
cmusselman@delamorent.com

Main Street Family Diner, LLC
(717) 655-5387
1543 E. Main St.
Waynesboro, PA 17268
Petrina Riley
petrinariley@waynesborofamilydiner.com
waynesborofamilydiner.com

Montezuma of Waynesboro
(717) 749-7452
118 Walnut St.
Waynesboro, PA 17268
Jose Carlos Munoz
rafaelmjr88@aol.com
montezumamex.com/menu

Parlor House, The
(717) 762-5415
724 S. Potomac St.
Waynesboro, PA 17268
Dave Zimmerman

Subway - Walmart
(717) 762-7770
12751 Washington Township Blvd
Waynesboro, PA 17268
Sunita Eversole
murali.nair02@yahoo.com

Subway - Waynesboro Mall
(717) 762-2292
608 E. Main St.
Waynesboro, PA 17268
Sunita Eversole
murali.nair02@yahoo.com

Toledo's Pizza and Italian Restaurant
717-749-7007
11655 Anthony Hwy
Waynesboro, PA 17268
Over Toledo
toledosrestaurant@gmail.com

Trigger's Table & Taproom
(717) 494-1366
11765 Hades Church Rd.
Greencastle, PA 17225
Sharah Trigger
totterysnail@yahoo.com
TriggersTableandTaproom.com

Velvet Cafe, The
(717) 762-7916
145 W. Third St.
Waynesboro, PA 17268
Dave Wishard
dwishard56@yahoo.com
the-velvetcafe.com

RETAIL

bathe
(717) 655-8243
70 W Main St
Waynesboro, PA 17268
Mandy Bressler
mandy@getbathe.com
getbathe.com

Brimstone & Bone, Co
(888) 217-6819
Waynesboro, PA 17268
Molly Ellis
hello@brimstoneandboneco.com
brimstoneandboneco.com

Mason Dixon Creations
(717) 331-9913
30 E. Main Street
Waynesboro, PA 17268
Penny Misiak
Sales@masondixoncreations.com
www.masondixoncreations.com

Tri-State Baits
(717) 552-6227
72 West Gay St
Waynesboro, PA 17268
James Ganoe
origintackle@gmail.com
Lurebuild.com

ROOFING

Bonded Applicators, Inc.
(717) 762-1155
68 E. Main St.
Waynesboro, PA 17268
Amy Weber
amy@bondedapplicators.com
bondedapplicators.com

Mighty Dog Roofing
(717) 423-8854
8115 Shank Hess Road
Quincy Township, PA 17268
Ethan Reynolds
ereynolds@mightydogroofing.com
mightydogroofing.com

Varner Roofing
(717) 491-0550
12236 Snyder Ave
Waynesboro, PA 17268
Josh Varner
josh@varnerroofing.com
VarnerRoofing.com

SALONS & SPAS

Bohemian Esthetics
(717) 891-8792
237 E. Main Street
Waynesboro, PA 17268
Kara Hanegraaf
bohemianesthetics.kh@gmail.com
bohemianesthetics.com

Crown Beauty and Barber Lounge LLC
(717) 387-5215
12080 Skyhawk Dr
Waynesboro, PA 17268
Amy Brown
crownbbl@gmail.com
crownbbl.salonrunner.com

NuVogue Hair & Tanning Studio
(717) 765-0558
1625 East Man Street
Waynesboro, PA 17268
Lisa Kline
lisakline22@comcast.net
nuvoguehair.com

SCHOOLS, COLLEGES, & UNIVERSITIES

Penn State Mont Alto
(717) 749-6000
1 Campus Drive
Mont Alto, PA 17237
Francis Achampong
fka3@psu.edu
montalto.psu.edu

Saint Andrew Catholic School
(717) 762-3221
213 E Main Street
Waynesboro, PA 17268
Sylvia Cartwright
enrollnow@saintandrewschool.org
saintandrewschool.org

Shalom Christian Academy
(717) 357-2223
126 Social Island Rd
Chambersburg, PA 17202
Marina Shannon
mshannon@shalomca.com
shalomca.com

Waynesboro Area School District
(717) 762-1191
210 Clayton Ave.
Waynesboro, PA 17268
wasd.k12.pa.us

SECURITY SERVICES

BresslerTech
(717) 977-1647
9861 Browns Mill Rd.
Greencastle, PA 17225
Harold Bressler
harold@bresslertech.com
bresslertech.com

SHREDDING

ALL-SHRED, Inc.
(301) 874-1480
4831 Winchester Blvd.,
Frederick, MD 21703
Mary Kulina
marypkulina@allshredmd.com
allshredmd.com

SIGNS, SCREEN PRINTING, & ENGRAVING

C-Ely Signs and Graphics
(717) 762-9404
310 West Main St
Waynesboro, PA 17268
Chad Ely
celysigns@yahoo.com
c-elysigns.com

Olympian Athletics
(717) 765-8615
55 W. Main St.
Waynesboro, PA 17268
Douglas Hartzok
dhartzok@innernet.net
oaprinting.com

Sanders Creations and Laser Graphics
(717) 762-2461
43 E. Main St.
Waynesboro, PA 17268
David Sanders
handyman9@comcast.net
sandersgraphic.net

Wayne Driscoll Custom Signs
(717) 404-8642
125 S. Broad St.
Waynesboro, PA 17268
Wayne Driscoll
wayne@customsignstudio.com

Yard Card Angels
(301) 202-4323
10521 Susquehanna Ave
Waynesboro, PA 17268
Diane Sandy
dmsandy@embarqmail.com

SOCIAL CLUBS

American Legion
(717) 762-5520
63 E. Main St.
Waynesboro, PA 17268
Kristi Patterson
manager@waynesborolegion.com
waynesborolegion.com

Eagles Club, Inc.
(717) 762-8688
16 E. Main St.
Waynesboro, PA 17268
Lance Baker
secretary@eaglesclubinc.org
eaglesclubinc.org

Owl's Club, Inc.
(717) 762-6215
87 W. Main St.
Waynesboro, PA 17268
Chip Shaffer
OwlsClub01@gmail.com

SURVEYORS

R. Lee Royer & Associates
(717) 762-5619
10764 Buchanan Trail East
Waynesboro, PA 17268
Lee Royer
leeroyerassociates@comcast.net
rleeroyerassociates.com

TAXI

Compassion Transport Services LLC
(717) 688-9498
Waynesboro, PA 17268
Angela Lehigh
compassiontransport@outlook.com
ridewithcompassion.com

Paylor Transport
1-717-300-3261
9662 Molly Pitcher Hwy
Shippensburg, Pa 17257
Kimmie Wiesniewski
paylortransport@outlook.com
paylortransport.com

TELECOMMUNICATIONS

Tele-Plus
(800) 542-2733
916 Elridge Dr
Hagerstown, MD 21740
Steve Cotton
scotton@telepluscorp.com
www.telepluscorp.com

TOURISM & TRAVEL SERVICES

Cruise Planners
(717) 477-0111
265 Newville Rd
Shippensburg, PA 17257
Carol DiBiase
carol.dibiase@cruiseplanners.com
cruisestravelresorts.com

Franklin County Visitors Bureau, Inc.
(717) 552-2977
15 South Main Street
Chambersburg, PA 17201
Janet Pollard
jpollard@explorefranklincountypa.com
explorefranklincountypa.com

TREE SERVICE

Antietam Tree & Turf
(301) 791-3500
405 N. Burhans Blvd.
Hagerstown MD, 21740-3761
J. Roger Finn
info@antietamtree.com
antietamtree.com

Bartlett Tree Experts
(717) 765-0370
951 Progress Road
Chambersburg, PA 17201
Derek Furry
dfurry@bartlett.com
barlett.com

UTILITIES

Mont Alto Municipal Authority
(717) 749-5808
P.O. Box 427
Mont Alto, PA 17237
Patricia Kocek
mab@comcast.net
montaltoborough.com

Washington Township Municipal Authority
(717) 762-3108
11102 Buchanan Trail East
Waynesboro, PA 17268
Andrew Zeigler
manager@wtma.us
wtma.us

VETERINARIANS

Wayne Heights Animal Hospital
(717) 765-9636
2085 E. Main St.
Waynesboro, PA 17268
John Barnes
info@whahvet.com
whahvet.com

Waynesboro Veterinary Clinic, Inc.
(717) 762-0221
11420 Anthony Highway
Waynesboro, PA 17268
Patrick McCullough
wvc@waynesboroveterinaryclinic.com
waynesboroveterinaryclinic.com

WASTE DISPOSAL SERVICES

Waste Management
(717) 597-6915
9446 Letzburg Road
Greencastle, PA 17225
Patrick Heraty
mheraty@wm.com
wm.com

1884 Market House
(717) 377-8517

2085 Productions
(717) 387-2118

A&B Dance Dimensions
(717) 762-4456

AAA Paving & Excavating, Inc.
(717) 762-4940

AFS Insurance & Financial Service
(717) 762-5780

Alan Fishman Coldwell Banker Realty
(301) 518-8390

Alexander Hamilton Memorial
Free Library
(717) 762-3335

ALL-SHRED, Inc.
(301) 874-1480

American Custom Auto Care
(717) 387-0291

American Legion
(717) 762-5520

American Recycling Service, Inc.
(717) 749-5751

Antietam Dairy
(717) 762-6212

Antietam Eye Associates, Inc.
(717) 387-5657

Antietam Humane Society, Inc.
(717) 762-9091

Antietam Pharmacy
(717) 762-1164

Antietam Realty, Inc.
(717) 765-8011

Antietam Tree & Turf
(301) 791-3500

Antrim Insurance Agency, Inc.
(717) 762-4565

APX Null Machine Shop
(717) 597-3330

Around The Rock
(717) 377-6793

Arts Alliance of Greater Waynesboro/
Destination ARTS'
(717) 655-2500

Ascend Career Services
(717) 477-2745

Avalon Townhomes
(717) 749-7500

B&D Lawn & Landscape, Inc.
(717) 765-4551

B&H Lawn and Floral Inc.
(717) 762-2439

Barrel & Lace
(717) 552-5441

Bartlett Tree Experts
(717) 765-0370

bathe
(717) 655-8243

BCM Payroll Services, Inc.
(717) 264-7374

Beavers Auto Body & Collision
(717) 762-8322

Beck Manufacturing
(717) 762-9141

Beck, Stephen E.
(717) 762-9423

Beer Shed, The
(717) 762-3711

Bell Insurance, Inc.
(717) 597-1151

Biblical Education Center Library
(717) 597-0057

Bilder & Sons Plumbing
(301) 471-8621

Biltwood Powder Coating
(717) 593-9400

BKM Designs
(717) 552-0351

Blaise Alexander Chevrolet
(717) 597-2131

BLAST
(240) 344-5093

Blondie's
(717) 762-9030

Bloom Dance Studio, LLC
(240) 500-6009

Blue Ridge Fire & Rescue
(717) 794-2323

Blue Ridge Risk Partners
(717) 762-3147

Blue Ridge Summit Free Library
(717) 794-2240

Bohemian Esthetics
(717) 891-8792

Bonded Applicators, Inc.
(717) 762-1155

Borough of Waynesboro
(717) 762-2101

Breast Cancer Awareness
Cumberland Valley
(301) 791-5843

Brechbill & Helman Construction
Company, Inc.
(717) 263-4621

BresslerTech
(717) 977-1647

Brimstone & Bone, Co
(888) 217-6819

Brio Coffeehouse, Inc
(717) 889-0412

Buchanan Auto Park
(717) 762-1107

Buchanan Automotive
(717) 762-3141

Buchanan Settlement Services,
Ltd., Inc.
(717) 762-1415

C K Auto and Truck LLC
(717) 765-4500

C-Ely Signs and Graphics
(717) 762-9404

Cafe Del Sol
(717) 762-1477

Calvary Assembly of God, Inc.
(717) 762-5432

Camp Penn
(717) 762-2693

Capitol Theatre Center
717-263-0202

Ceramic Arts Center of
Waynesboro, The
(717) 372-7906

Cermak Technologies, Inc.
(717) 762-8234

Christ United Methodist Church
(717) 762-7042

Clearwater Electric
(727) 415-5322

Cobblestone Hotel & Suites
(717) 765-0034

Compassion Transport Services LLC
(717) 688-9498

Congressman Dr. John Joyce (717) 753-6344	East Coast Training Asylum (717) 404-4779	Friends of the Monterey Pass Battlefield, Inc (717) 762-5619	Hess Custom Builders (717) 762-2902	Keystone Valley Electric, Inc. (717) 762-8592	McLaughlin's Energy Services (717) 762-5711
Connection, Inc. The (717) 387-2403	Edge Fiber Solutions LLC (410) 207-0875	Funcastle Fun Center (717) 593-9621	Holly Bertone Wellness and Mind- fulness Coach, Consultant, and Speaker (703) 835-5534	Kulla, Barkdoll and Stewart, P.C. (717) 762-3374	Meadow Breeze LLC (717) 765-6996
Corning Credit Union - CCU 1-800-677-8506 Ext 5130	Edward Jones - Bob Correll (717) 765-0166	G. W. Electric Company, Inc. (717) 597-7137	Holmes Watercolors (240) 315-8454	L.T. Rush Stone and Fireplace (717) 765-6941	Mercy House of Chambersburg (717) 575-5035
Country Sealcoating's & Paving (717) 762-0600	Edward Jones - Douglas W. Smith (717) 762-0911	Ganoe Paving Inc (717) 597-2567	HomeRite Windows & Doors (717) 749-4874	Law Office of Jeffrey S. Evans (717) 762-1415	Megan's Custom Framing 717-655-5206
Covenant Family Dentistry (717) 762-1515	Edward Jones - Frank Pinto (717) 655-2244	Grace Baptist Church (717) 762-9323	Horizon Goodwill Industries (301) 733-7330	Lawrence J. Hoffman, CPA P.C. (877) 691-6850	Meritus Health (301) 790-8000
Crown Beauty and Barber Lounge LLC (717) 387-5215	Edward Jones - Marissa Correll (717) 655-2244	Graphics Universal Inc (717) 597-3108	Hurley Auctions (717) 597-9100	LCBC Church (717) 749-3451	Michaux Brewing Company (717) 765-7474
Cruise Planners (717) 477-0111	Eichholz Flowers (717) 762-7131	GRC General Contractor Inc. (717) 762-1116	Iron Valley Real Estate of Waynesboro (717) 723-3351	Leg Up Farm Franklin County (717) 352-3046	Middletown Valley Bank (717) 788-3250
Cumberland Valley School of Music (717) 261-1220	Elevation Healthcare (717) 655-2509	Green Arbor Landscape, LLC (717) 762-9344	ISO Advantage, LLC (717) 339-8365	Lehmans Carpet (717) 264-7070	Mighty Dog Roofing (717) 423-8854
Dairy Queen (717) 762-8944	Elite Window Fashions (717) 762-5627	Green Grove Gardens (717) 597-0800	Ivy Hill Farm (240) 527-9268	Leland of Laurel Run, The (717) 749-0083	Modern Casework Inc. (717) 331-1543
DanFoss/AAIM Controls (717) 765-9100	Empowered Cleaning LLC (717) 860-2152	Green Hill Cemetery Association (717) 762-2759	J & M Printing (717) 762-8204	Lenca Coffee Roasters (717) 660-9448	Mont Alto Borough (717) 749-5808
Dave Shockey Auto Body (717) 762-7106	Erin Shank Insurance Agency/ State Farm (717) 762-7101	Greencastle-Antrim Chamber of Commerce (717) 597-4610	J.C. BAR Properties, Inc. (717) 761-7801	Lightning Industrial Tool Grinding (717) 762-5211	Mont Alto Municipal Authority (717) 749-5808
David M. Green Bookkeeping & Tax Service (717) 655-2560	Essential Marketing Concepts (717) 552-2968	Grove-Bowersox Funeral Home, Inc. (717) 762-2811	Jake's Electric, LLC (717) 977-6382	LIU12 Franklin County Literacy Council (717) 504-4459	Montezuma of Waynesboro (717) 749-7452
DD & Son, Inc. (717) 765-8559	Evangelical Lutheran Church (717) 762-9151	Guardian Booth (844) 992-6684	James Shoes (717) 762-1945	Local.News LLC (717) 404-8726	Moonlight and Lace Boudoir (240) 347-3343
Decker Electrical Services, Inc. (717) 762-4111	F&M Trust (717) 762-2188	Gundacker Group, Kimberley (717) 387-3080	Jamison-B.M.P., LLC (240) 313-7914	Luminest, Inc. (717) 977-3900	Mountain Valley Real Estate (717) 762-9329
Delamor Enterprisers/McDonald's (717) 263-5641	Fil-Tec Inc. (301) 824-6166	Habitat for Humanity of Franklin County (717) 267-1899	JB Technical Solutions Inc. (717) 316-0078	M & T Bank (717) 765-3315	Musselman & Creager, LLP (717) 762-0331
Denny's Garage (717) 749-5546	First Start Partnerships (717) 263-8019	Hammer Down Customs (717) 655-2602	JM Automotive Repair, LLC (717) 762-1456	Main Street Family Diner, LLC (717) 655-5387	Nanner Bananer Bakery (717) 977-2927
Dice Office Equipment (717) 597-0300	Five Forks Brethren in Christ Church (717) 762-2991	Hammond's Painting (717) 387-1542	John Briggs Photography (717) 977-1238	Mainstreet Waynesboro, Inc. (717) 762-0397	New Enterprise Stone & Lime (717) 267-2244
Dick, Phyllis Alta (717) 794-5120	Fort Ritchie Community Center (301) 241-5085	Hawley Memorial Presbyterian Church (717) 794-2637	Johnson Controls - FRICK (717) 762-2121	Manitowoc Crane-Group - Grove Worldwide (717) 597-8121	Newcomer's Auto & Truck Parts (717) 762-1532
Drayer Physical Therapy Institute (717) 387-8052	Franklin County Commissioners (717) 264-4125	Hearthstone Retirement Home & In-Home Care Services (717) 762-6313	JZ Financial Management (717) 660-0709	Marsh Run Kennels (717) 331-8762	NEWS TALK 1037FM/ Magnum Broadcasting (877) 709-1037
DSS Law (717) 762-1160	Franklin County Community Foundation (717) 236-5040	Herbert, Rowland & Grubic, Inc (717) 263-2070	Kandor Real Estate (717) 762-8100	Martz Plumbing, Heating & A/C, Inc. (717) 762-6115	Nolan Masonry LLC (717) 552-4874
Dunkin Donuts / Ridhi Siddhi PA, Inc (732) 822-1173	Franklin County Visitors Bureau, Inc. (717) 552-2977	Hess Auto Body & Large Truck Repairs (717) 267-6091	Keystone Ford (717) 264-5104	Mason Dixon Creations (717) 331-9913	Norland Avenue Pharmacy LLC (717) 217-6790
Eagles Club, Inc. (717) 762-8688	Franklin Hospice (717) 504-3465		Keystone Health (717) 709-7900	Matt Gunder Coldwell Banker Realty (717) 765-2566	NuVogue Hair & Tanning Studio (717) 765-0558

Oasis Senior Advisors (240) 866-0064	ProTube, Inc. (717) 765-9400	S. Stine & Son Lawn & Garden (717) 729-5348	Subway - Waynesboro Mall (717) 762-2292	Trigger's Table & Taproom (717) 494-1366	Waynesboro Country Club (717) 762-8401
Ocker Accountants & Consultants (717) 762-3161	Prudential Advisors (223) 386-6521	Saint Andrew Catholic School (717) 762-3221	Sue James, Author (717) 809-1135	Trinity United Church of Christ (717) 762-7191	Waynesboro Design Services, Inc. (717) 765-4569
Olympian Athletics (717) 765-8615	Quincy & Waynecastle Storage (717) 749-5944	Salem Church of Waynesboro (717) 762-8531	Sugar Hollow Farm Alpacas, LLC (717) 749-7056	Tru-Precision Lawn Care, Inc. (717) 762-7053	Waynesboro Early Learning Center (717) 762-9711
Operation Second Chance (301) 972-1080	Quincy Township Supervisors (717) 762-5679	Sanders Creations and Laser Graphics (717) 762-2461	Tammy Meyers, Independent Insurance Agent (717) 557-5831	United Way of Franklin County (717) 262-0015	Waynesboro Flooring (717) 788-4754
Orrstown Bank 1-888-677-7869	Quincy Village (717) 749-2300	Savage Family Pharmacy (717) 762-2915	Tele-Plus (800) 542-2733	Vaner Roofing (717) 491-0550	Waynesboro Lions Club (717) 762-7570
Otterbein Church - Waynesboro (717) 762-7147	R. Lee Royer & Associates (717) 762-5619	Scott & Associates CPA PC (717) 765-8515	Tevis Energy (717) 762-3811	Velvet Cafe, The (717) 762-7916	Waynesboro Physical Therapy and Sports Medicine (717) 655-5681
Owl's Club, Inc. (717) 762-6215	R. Thomas Murphy & Associates, P.C. (717) 762-1032	SEK, CPAs & Advisors (717) 263-3910	The Amberson House (717) 762-8112	Verstandig Media (717) 597-9200	Waynesboro Summer Jubilee, Inc. (717) 762-7123
Parlor House, The (717) 762-5415	Rainbow Gymnastics (717) 762-0448	Senator Doug Mastriano (717) 264-6100	The Center of Balance, LLC (717) 643-1404	Visiting Angels (717) 749-0458	Waynesboro Theatre (717) 387-5335
Patriot Federal Credit Union (717) 263-4444	Rainbow International of Waynesboro (717) 788-3032	Shadetree Garage (717) 655-5703	The House of Time (717) 398-0799	WACCO Properties, Inc. (717) 765-0465	Waynesboro Veterinary Clinic, Inc. (717) 762-0221
Paul Gunder Coldwell Banker Realty (717) 729-0200	RE/MAX Results - Arlene Unger Real Estate Team (240) 707-3200	Shalom Christian Academy (717) 357-2223	The Institute (717) 762-0373	WALL (Waynesboro Lioness Lions) (717) 794-5120	Waynesboro Volunteer Fire Depart- ment, Inc. (717) 762-2611
Paylor Transport (717) 300-3261	Real Kill Termite & Pest Control, LLC (717) 762-8448	Sherwin-Williams Company (717) 762-3913	The Law Offices of Samantha K. Wolfe (717) 655-2676	Warehouse Cinemas Leitersburg (240) 608-4900	Waynesboro Water Works, LLC (717) 762-6677
Peace and Serenity Spa (717) 372-1556	Red Roof Storage (717) 765-0071	Showalter & Miller, CPAs (717) 762-8116	The Lunch Place (717) 372-4527	Washington Township Municipal Authority (717) 762-3108	WBO Health & Fitness (717) 655-5024
Pediatric Specialists of F ranklin County, P.C. (717) 765-6621	Renfrew Museum and Park (717) 762-4723	Smith Company Design & Architecture (717) 387-56031	The Palms Bookkeeping Services (508) 325-2775	Washington Township Supervisors (717) 762-3128	WDStorage (717) 762-1755
Penn National Insurance (800) 388-4764	Representative Paul Schemel (717) 749-7384	Specialty Granules LLC (717) 794-2184	The Wildflower Marketplace (240) 310-4264	Waste Management (717) 597-6915	Wellspan Waynesboro Hospital (717) 765-4000
Penn State Mont Alto (717) 749-6000	Restoration Church of God in Christ (717) 655-5783	Spring of Hope Prayer Counseling (717) 762-0234	Thompson Oil Company, Inc. (717) 762-3011	Wayne Driscoll Custom Sign (717) 404-8642	WIKa Mobile Control (717) 217-2200
Piatt Law PLLC (717) 655-5487	Roger's Auto Sales (717) 762-2700	St. Mary's Episcopal Church (717) 762-1930	Tidy Bins (717) 357-9160	Wayne Heights Animal Hospital (717) 765-9636	Wild West Motors (717) 655-7260
Pictures Plus (717) 765-9223	Ronnie Martin Realty (717) 765-6511	State Farm Insurance - Chad Slimmer (717) 762-0650	Toledo's Pizza & Italian Restaurant (717) 749-7007	Waynesboro Area School District (717) 762-1191	Wishard's Garage & Trucking (717) 762-4143
Pockets Gaming and Billiard Lounge (717) 655-2049	Rotary Club of Waynesboro	Sterling Financial Management, Inc. (301) 733-7777	Tom Shockey Collision, Inc. (717) 765-8000	Waynesboro Area YMCA (717) 762-6012	Women of Valor Ministries, Inc. d/b/a ValorExcel (240) 329-9387
Postmasters Coffee and Bakery (240) 707-1373	Rough Edges Brewing (717) 655-7042	Stoneham's Motorsports, Inc. (717) 762-7420	Touhey Rentals (240) 527-9689	Waynesboro Beneficial Fund (717) 762-7123	Yappy Days Pet Grooming (240) 527-4475
Potomac Leasing LLC (717) 387-1946	Rouzerville Christian Church (717) 762-3776	Strickler Agency (717) 263-4179	Tri State Event Planning Services (717) 262-8839	Waynesboro Community & Human Services (717) 762-6941	Yard Card Angels (301) 202-4323
Potter, Lucinda D., CPA (717) 762-7185	Royal Flush Cleaning (301) 462-9295	Strouse Entertainment (717) 448- 1770	Tri-State Baits (717) 552-6227	Waynesboro Community Concert Association (717) 609-6853	Zody's Moving & Storage, Inc. (717) 762-4815
Pregnancy Ministries, Inc. (717) 655-5603	Ryan Fetterhoff - ReMax Elite Services (717) 729-1734	Subway - Walmart (717) 762-7770	Trident Enterprises International Inc. (717) 762-5912	Waynesboro Construction Company, Inc. (717) 762-1151
Primerica Financial Services (717) 749-5421					



THE LELAND

OF LAUREL RUN

Personal Care & Memory Care

Affordable Senior Living

Call 717-749-0083 today!

120 West Main Street Waynesboro, PA 17268 • lelandpersonalcare.com



THEY SAY HOME IS WHERE YOUR  IS . . . OURS IS IN WAYNESBORO

ALL INCLUSIVE RATES

Private & Shared Accommodations,
On-Site Physician, Lab,
X-Ray and Pharmacy Services,
Complimentary Medical Transportation,
On-Site Salon, Physical/Speech/Occupational Therapy Services,
Daily Activity Programming, & Much More!!



CALL TODAY TO
SCHEDULE YOUR
PERSONAL TOUR

717-749-0083

The Leland of Laurel Run – Personal Care & Secured Memory Care

120 West Main Street, Waynesboro, PA 17268

www.lelandpersonalcare.com